

Технические характеристики

По вопросам продаж и поддержки обращайтесь:

Алматы (7273)495-231	Казань (843)206-01-48	Новокузнецк (3843)20-46-81	Смоленск (4812)29-41-54
Архангельск (8182)63-90-72	Калининград (4012)72-03-81	Новосибирск (383)227-86-73	Сочи (862)225-72-31
Астрахань (8512)99-46-04	Калуга (4842)92-23-67	Омск (3812)21-46-40	Ставрополь (8652)20-65-13
Барнаул (3852)73-04-60	Кемерово (3842)65-04-62	Орел (4862)44-53-42	Сургут (3462)77-98-35
Белгород (4722)40-23-64	Киров (8332)68-02-04	Оренбург (3532)37-68-04	Тверь (4822)63-31-35
Брянск (4832)59-03-52	Краснодар (861)203-40-90	Пенза (8412)22-31-16	Томск (3822)98-41-53
Владивосток (423)249-28-31	Красноярск (391)204-63-61	Пермь (342)205-81-47	Тула (4872)74-02-29
Волгоград (844)278-03-48	Курск (4712)77-13-04	Ростов-на-Дону (863)308-18-15	Тюмень (3452)66-21-18
Вологда (8172)26-41-59	Липецк (4742)52-20-81	Рязань (4912)46-61-64	Ульяновск (8422)24-23-59
Воронеж (473)204-51-73	Магнитогорск (3519)55-03-13	Самара (846)206-03-16	Уфа (347)229-48-12
Екатеринбург (343)384-55-89	Москва (495)268-04-70	Санкт-Петербург (812)309-46-40	Хабаровск (4212)92-98-04
Иваново (4932)77-34-06	Мурманск (8152)59-64-93	Саратов (845)249-38-78	Челябинск (351)202-03-61
Ижевск (3412)26-03-58	Набережные Челны (8552)20-53-41	Севастополь (8692)22-31-93	Череповец (8202)49-02-64
Иркутск (395)279-98-46	Нижний Новгород (831)429-08-12	Симферополь (3652)67-13-56	Ярославль (4852)69-52-93
Россия (495)268-04-70	Киргизия (996)312-96-26-47	Казахстан (7172)727-132	

113 Engineer's Steel Bench Vices

Built to withstand the shocks of hammering, chipping and other tough applications

All steel construction

Fixed base vices with an integrated anvil for shaping and beating

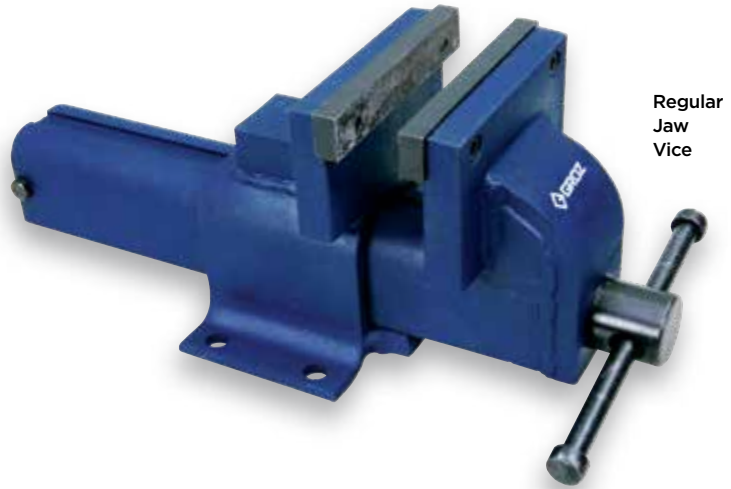
Extra heavy-duty sliding jaw and large diameter screw.

Forged Tommy bar along with the steel main screw helps in effective transmission of pressure on the work piece.

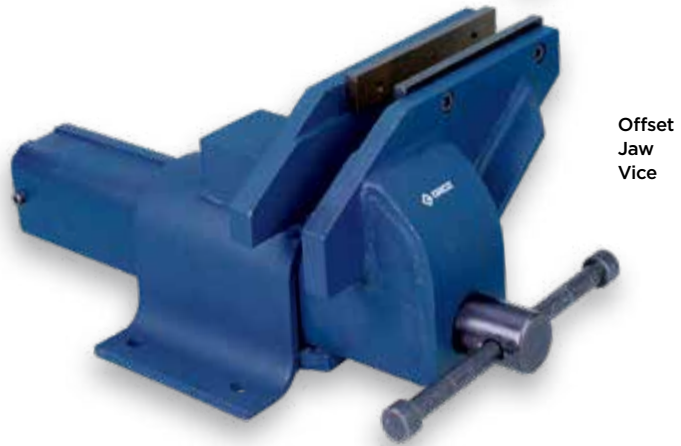
Carbon Steel jaws are hardened 50 ± 5 HRC to withstand tough use and are serrated for non-slip grip.

Safety stopper provided at the end of slide prevents slide from fall during usage.

Also available is the Offset Jaw Vice: Offset jaw design allows for unlimited vertical depth for holding long jobs without any obstruction from the vice slide



Regular Jaw Vice



Offset Jaw Vice



Offset jaws hold long & bulky jobs without obstruction from the vice slide

ORDERING INFORMATION

CAT NR.	ORD NR.	JAW WIDTH		JAW OPENING		THROAT DEPTH		NET WT (KGS)
		(INCH)	(MM)	(INCH)	(MM)	(INCH)	(MM)	
REGULAR JAW VICES								
EBV/F/100	35450	4	100	4.3/4	120	3.5/32	80	6.30
*EBV/F/150	35451	6	150	6	150	3.5/8	90	18.00
*EBV/F/200	35452	8	200	8	200	4.3/8	110	37.500
EBV/F/250	35458	10	250	10	250	4-23/32	120	43.00
EBV/F/300	35459	12	300	12	300	6	150	46.50
OFFSET JAW VICES								
OBV/F/100	35460	4	100	4.3/4	120	—	—	7.00
*OBV/F/150	35461	6	150	7	175	—	—	20.00
OBV/F/200	35462	8	200	8	200	—	—	40.00

* Best Seller



Rigid & robust cast vices with excellent shock bearing capacity and high strength under compression

Fully machined front jaw beam fully encloses vice spindle protecting threads from contaminants & damage

Unbreakable SG Iron nut ensures maximum thread surface contact and constant alignment between body and the sliding jaw.

Perfect alignment of main screw and nut reduces wear and gives long trouble free service

Jaws hardened 45± 5 HRC for increased resistance to wear.

Knurling on jaws ensures a firm grip of the work piece

Vice body has an attractive powder coated finish with main screw and handle chrome plated. The anvil has a ground finish

Available with:

1. Fixed Base
2. Swivel Base

Vice can rotate 360° making it useful in confined spaces or in applications where the angle of the vice has to be changed frequently to accept work of varying lengths. The swivel base can be conveniently removed and the vice converted back to a regular fixed base vice

These are available in 2 types:

a. Heavy Duty Mechanic's BV Series Vices

Amongst the heaviest and most sturdy vices in the market place. The strong body, heavy slide jaw and large diameter main screw are designed to withstand tough usage in industrial applications and training workshops. Swivel bases are available as spares

b. Mechanic's BNV Series Vices

- Though lighter in weight than the Heavy Duty model, these are extremely sturdy and very useful in general purpose workshop applications
- These vices are designed for gripping / holding jobs and should not be used where heavy hammering is anticipated

Heavy Duty Mechanic's BV Series Vices



Fixed Base Vices



Swivel Base Vices

ORDERING INFORMATION

CAT NR.	ORD NR.	JAW WIDTH		JAW OPENING		THROAT DEPTH		NET WT. EACH (KG)
		(INCH)	(MM)	(INCH)	(MM)	(INCH)	(MM)	
FIXED BASE VICES								
BV/F/75	35400	3	75	4	100	2	50	5.500
*BV/F/100	35401	4	100	5	125	2.5/32	55	9.700
BV/F/125	35402	5	125	6	150	2.3/4	70	14.700
*BV/F/150	35403	6	150	7	175	3.5/32	80	18.200
BV/F/200	35404	8	200	8	200	4	100	30.400
SWIVEL BASE VICES								
BV/S/75	35405	3	75	4	100	2	50	6.500
BV/S/100	35406	4	100	5	125	2.5/32	55	11.800
*BV/S/125	35407	5	125	6	150	2.3/4	70	18.000
*BV/S/150	35408	6	150	7	175	3.5/32	80	22.000
BV/S/200	35409	8	200	8	200	4	100	36.400

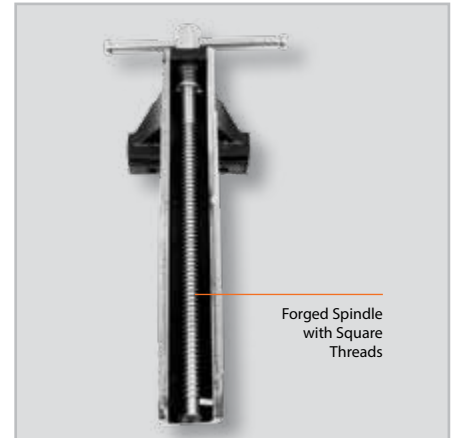
CAT NR.	ORD NR.	SUITABLE FOR VICE WITH JAW WIDTH	
		(INCH)	(MM)
SWIVEL BASES			
SWB/75	35420	3	75
SWB/100	35421	4	100
SWB/125	35422	5	125
SWB/150	35423	6	150
SWB/200	35424	8	200

* Best Seller

Mechanic's BNV Series Vices



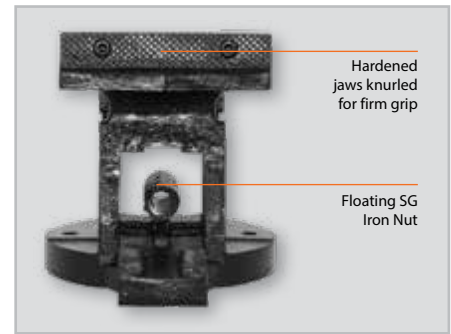
Fixed Base Vices



Forged Spindle with Square Threads



Swivel Base Vices



Hardened jaws knurled for firm grip

Floating SG Iron Nut

ORDERING INFORMATION

CAT NR.	ORD NR.	JAW WIDTH		JAW OPENING		THROAT DEPTH		NET WT. EACH (KG)
		(INCH)	(MM)	(INCH)	(MM)	(INCH)	(MM)	
FIXED BASE								
*BNV/F/100	35471	4	100	4	100	2-9/32	58	7.00
BNV/F/125	35472	5	125	5	125	2-7/8	72	10.50
*BNV/F/150	35473	6	150	6	150	3-1/8	79	13.50
BNV/F/200	35474	8	200	8	200	3-9/64	80	21.50
SWIVEL BASE								
BNV/S/100	35481	4	100	4	100	2-9/32	58	8.00
BNV/S/125	35482	5	125	5	125	2-7/8	72	12.00
*BNV/S/150	35483	6	150	6	150	3-1/8	79	15.50
BNV/S/200	35484	8	200	8	200	3-9/64	80	24

* Best Seller

CAST

TENSILE STRENGTH

20000 PSI
1400 KG/CM2

NO HAMMERING



115 Drill Press Vices Unigrip

Low profile & compact vices are suitable for use with drill stands, bench drills and drill presses in metal and woodworking applications

Graded cast iron construction with precision ground base and vice bed

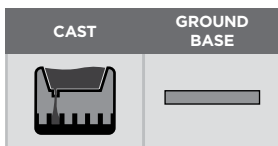
Fixed jaw with 3 longitudinal and 1 transversal prisms for firm gripping of round stock both horizontally and vertically

Special seat in jaws for clamping of low height work pieces

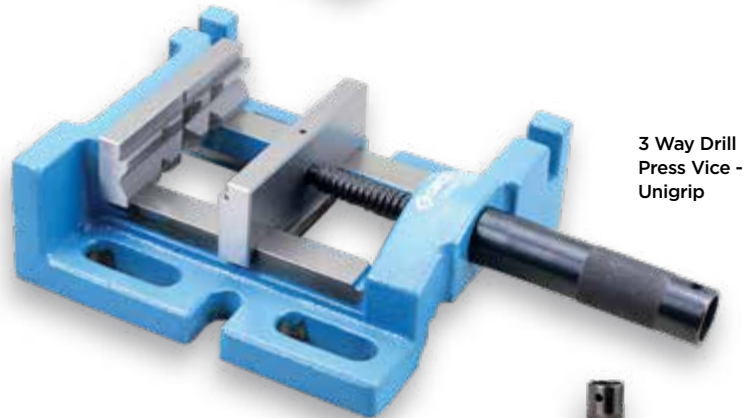
Spindle moves inside the hollow hand grip making the vice usable on any position across the table
Elongated clamping slots for rapid adjustment of the vice on the work table help save time

3 Way Drill Press Vice:

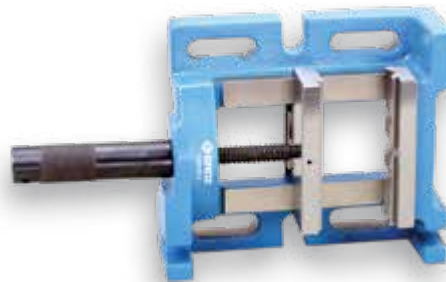
Also available with 3 mounting options via 2 additional precisely ground surfaces: end face and side face. This allows for drilling along all axes with a single setting of the job and holding of long workpieces which are cumbersome and difficult to manage in regular vices



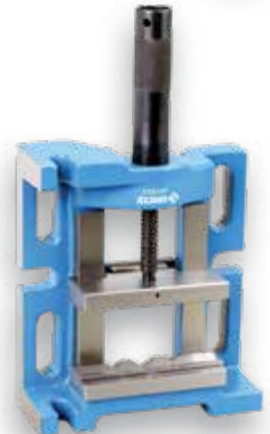
Drill Press Vice - Unigrip



3 Way Drill Press Vice - Unigrip



Fully ground side face allows for right angle machining with the same jaw setting. The jaw width acts as jaw height facilitating longer workpieces to be held



Fully ground end face allows for right angle machining with the same machine setting

ORDERING INFORMATION

CAT NR.	ORD NR.	JAW WIDTH		JAW OPENING		JAW DEPTH	
		(INCH)	(MM)	(INCH)	(MM)	(INCH)	(MM)
DRILL PRESS VICES - UNIGRIP							
DPV/UG/75	35120	3.3/16	80	2.3/4	70	1.3/16	30
*DPV/UG/100	35121	4	100	3.5/8	92	1.3/16	30
*DPV/UG/125	35122	5	120	4.3/8	110	1.3/8	35
3 WAY DRILL PRESS VICE - UNIGRIP							
DPV/UG/3/100	35125	4	100	3.1/2	88	1.3/16	30

* Best Seller

116 Reversible Vice

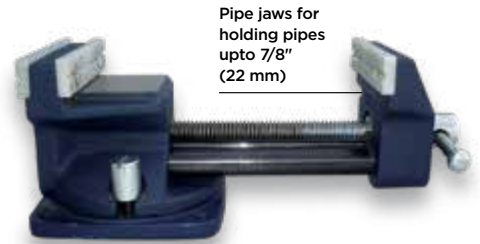
Cast Iron construction with 360° swivel base

Body & sliding jaw aligned with two steel guide rods and main screw for smooth action

Polypropylene jaws impart a soft yet firm grip. Under pressure jaws reshape to grip work piece securely and return to their original shape when the job is removed



V Grooved polypropylene jaws help in holding round and thin materials gently but firmly

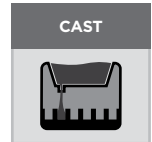


Pipe jaws for holding pipes upto 7/8" (22 mm)

REVERSIBLE: Jaw capacity can be doubled from 3.1/2" (90mm) to 7" (175mm) by removing the sliding jaw and placing it at the back of the body

ORDERING INFORMATION

CAT NR.	ORD NR.	JAW WIDTH		JAW OPENING		THROAT DEPTH		PIPE JAW CAPACITY	
		(INCH)	(MM)	(INCH)	(MM)	(INCH)	(MM)	(INCH)	(MM)
RV/75-175	35530	3.1/2	90	3.1/2	90	1.1/2	40	7/8	22
				Reversed					
				7	175				



117 Hand Vices

Manufactured from high quality grey iron castings these vices are best suited for working on small jobs

Vice can either be gripped in one hand or held between the jaws of a larger vice thus allowing better access to the work piece

Jaws tightened via large wing nut

Attractive enamelled finish with plated main screw



ORDERING INFORMATION

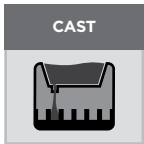
CAT NR.	ORD NR.	OVERALL LENGTH		JAW WIDTH	
		(INCH)	(MM)	(INCH)	(MM)
HV/75	35500	3	75	1.3/8	35
*HV/100	35501	4	100	1.9/16	40
HV/125	35502	5	125	2	50

* Best Seller



A range of compact vices for a wide variety of metal and woodworking applications. Ideal for use by model makers and DIY enthusiasts, these can also be used by the serious craftsman for light duty jobs.

Manufactured from high quality grey iron castings and machined to close tolerances results in smooth operation and reliability. Attractive enamelled finish with main screw and handle in chrome plated finish.



These are available in 3 types:

a. Hobbyist Vices with fixed and swivel bases:

For applications that involve working in confined spaces, the swivel base vice is the ideal answer.

b. Hobbyist Vices with an integrated clamp:

The integrated clamp renders portability to the vice allowing it to be clamped conveniently onto any working surface.

c. Hobbyist Vice with swivel base and integrated clamp:

Portable and compact, the built in clamp allows the vice to be clamped onto any surface 1.1/2" (38 mm) deep easily. The swiveling base further enhances the versatility of the vice.



Fixed Base Vice



Swivel Base Vice



Hobbyist Vices With An Integrated Clamp



Hobbyist Vice With Swivel Base & Integrated Clamp

ORDERING INFORMATION

CAT NR.	ORD NR.	JAW WIDTH		INTEGRATED CLAMP CAPACITY	
		(INCH)	(MM)	(INCH)	(MM)
FIXED BASE					
*TBV/FB/32	35510	1.1/4	32	--	--
TBV/FB/40	35511	1.5/8	40	--	--
TBV/FB/50	35512	2	50	--	--
TBV/FB/60	35513	2.3/8	60	--	--
TBV/FB/75	35514	3	75	--	--
SWIVEL BASE					
TBV/SB/32	35515	1.1/4	32	--	--
TBV/SB/40	35516	1.5/8	40	--	--
TBV/SB/50	35517	2	50	--	--
*TBV/SB/60	35518	2.3/8	60	--	--
*TBV/SB/75	35519	3	75	--	--
WITH INTEGRATED CLAMP					
TBV/C/32	35521	1.1/4	32	1.1/8	29
TBV/C/40	35522	1.5/8	40	1.3/8	35
TBV/C/50	35523	2	50	1.3/8	35
*TBV/C/60	35524	2.3/8	60	1.11/16	43
TBV/C/75	35525	3	75	1.3/4	45
TBV/C/100	35526	4	100	1.3/4	45
WITH SWIVEL BASE AND INTEGRATED CLAMP					
TBV/RC/50	35520	2	50	1.1/2	38

* Best Seller

119 G Clamps General Purpose

Most superior and popular amongst various G clamps of this category

Manufactured from SG iron with a tensile strength of over 60,000 PSI these are guaranteed unbreakable under normal usage. Handle is designed to bend before the frame is overstressed

Steel main screw has ACME threads for smooth operation.

Swivelling pad adopts the correct angle and applies even pressure on the work piece

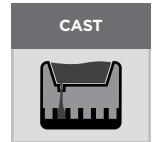
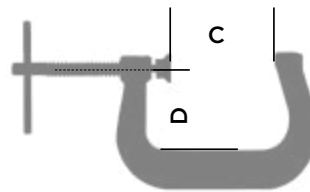
Textured powder coated finish with spindle in black oxide finish for increased resistance to corrosion

These are useful for a variety of metal and woodworking applications

ORDERING INFORMATION

CAT NR.	ORD NR.	CAPACITY (C)		THROAT DEPTH (D)		FRAME PROOF LOAD	
		(INCH)	(MM)	(INCH)	(MM)	(KGS)	(LBS)
GCL/13D/50	35807	2	50	1.5/8	42	363	800
GCL/13D/75	35800	3	75	1.11/16	44	455	1000
*GCL/13D/100	35801	4	100	2.11/32	59	545	1200
*GCL/13D/150	35802	6	150	3	75	635	1400
GCL/13D/200	35803	8	200	3.1/8	80	775	1700
GCL/13D/250	35804	10	250	3.1/2	90	1000	2200
GCL/13D/300	35805	12	300	4	100	1135	2500

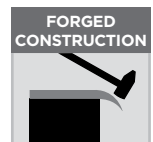
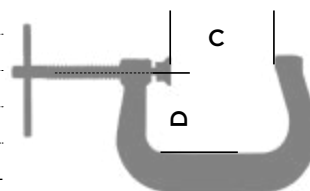
* Best Seller



120 G Clamps Junior

Clamps are individually forged making them amongst the strongest junior G Clamps

Frames are powder coated & steel screws are zinc plated for increased resistance to corrosion



ORDERING INFORMATION

CAT NR.	ORD NR.	CAPACITY (C)		THROAT DEPTH (D)		FRAME PROOF LOAD	
		(INCH)	(MM)	(INCH)	(MM)	(KGS)	(LBS)
GCL/FSJ/1/N	35730	1	25	1	25	225	500
*GCL/FSJ/1-1-2/N	35732	1-1/2	38	1-1/2	38	385	850
*GCL/FSJ/0-2/N	35733	2	50	1-1/4	31	400	875
GCL/FSJ/2-1-2/N	35734	2-1/2	63	2-1/2	63	385	850
GCL/FSJ/0-3/N	35735	3	75	1-3/8	35	500	1100

* Best Seller

MULTI PURPOSE VICE

Product Brief

Truly versatile multi-purpose vice, ideal for use both by mechanic's and professional alike

SG iron movable jaw and slide accurately machined for smooth and reliable clamping

Jaws hardened 50±5 HRC for increased resistance to wear

Knurling on jaws ensures firm grip on the work piece.

Fused steel handle prevents overloading

Integrated 360° swivel base with four point bench mounting for convenient usage in confined spaces or in applications where the angle of the vice has to be changed frequently

Rotating jaw head allows the selection of either a standard parallel serrated jaw or pipe jaws with an integral V-jaw assembly depending on the work in hand.

Pipe Jaw can hold pipes with diameter upto 5-3/8" (137 mm)

Jaw head can be pivoted 180° either sides and locked in position giving the user complete flexibility to adjust vice to any required working angle with ease

CAT NR.	ORD NR.	JAW WIDTH		JAW OPENING		THROAT DEPTH		NET WEIGHT	
		(INCH)	(MM)	(INCH)	(MM)	(INCH)	(MM)	(KG)	(LB)
BV/MP/125	35477	5	125	5	125	2 - 3/4	70	15.50	34



По вопросам продаж и поддержки обращайтесь:

Алматы (7273)495-231	Казань (843)206-01-48	Новокузнецк (3843)20-46-81	Смоленск (4812)29-41-54
Архангельск (8182)63-90-72	Калининград (4012)72-03-81	Новосибирск (383)227-86-73	Сочи (862)225-72-31
Астрахань (8512)99-46-04	Калуга (4842)92-23-67	Омск (3812)21-46-40	Ставрополь (8652)20-65-13
Барнаул (3852)73-04-60	Кемерово (3842)65-04-62	Орел (4862)44-53-42	Сургут (3462)77-98-35
Белгород (4722)40-23-64	Киров (8332)68-02-04	Оренбург (3532)37-68-04	Тверь (4822)63-31-35
Брянск (4832)59-03-52	Краснодар (861)203-40-90	Пенза (8412)22-31-16	Томск (3822)98-41-53
Владивосток (423)249-28-31	Красноярск (391)204-63-61	Пермь (342)205-81-47	Тула (4872)74-02-29
Волгоград (844)278-03-48	Курск (4712)77-13-04	Ростов-на-Дону (863)308-18-15	Тюмень (3452)66-21-18
Вологда (8172)26-41-59	Липецк (4742)52-20-81	Рязань (4912)46-61-64	Ульяновск (8422)24-23-59
Воронеж (473)204-51-73	Магнитогорск (3519)55-03-13	Самара (846)206-03-16	Уфа (347)229-48-12
Екатеринбург (343)384-55-89	Москва (495)268-04-70	Санкт-Петербург (812)309-46-40	Хабаровск (4212)92-98-04
Иваново (4932)77-34-06	Мурманск (8152)59-64-93	Саратов (845)249-38-78	Челябинск (351)202-03-61
Ижевск (3412)26-03-58	Набережные Челны (8552)20-53-41	Севастополь (8692)22-31-93	Череповец (8202)49-02-64
Иркутск (395)279-98-46	Нижний Новгород (831)429-08-12	Симферополь (3652)67-13-56	Ярославль (4852)69-52-93
Россия (495)268-04-70	Киргизия (996)312-96-26-47	Казахстан (7172)727-132	