

Технические характеристики

По вопросам продаж и поддержки обращайтесь:

Алматы (7273)495-231	Казань (843)206-01-48	Новокузнецк (3843)20-46-81	Смоленск (4812)29-41-54
Архангельск (8182)63-90-72	Калининград (4012)72-03-81	Новосибирск (383)227-86-73	Сочи (862)225-72-31
Астрахань (8512)99-46-04	Калуга (4842)92-23-67	Омск (3812)21-46-40	Ставрополь (8652)20-65-13
Барнаул (3852)73-04-60	Кемерово (3842)65-04-62	Орел (4862)44-53-42	Сургут (3462)77-98-35
Белгород (4722)40-23-64	Киров (8332)68-02-04	Оренбург (3532)37-68-04	Тверь (4822)63-31-35
Брянск (4832)59-03-52	Краснодар (861)203-40-90	Пенза (8412)22-31-16	Томск (3822)98-41-53
Владивосток (423)249-28-31	Красноярск (391)204-63-61	Пермь (342)205-81-47	Тула (4872)74-02-29
Волгоград (844)278-03-48	Курск (4712)77-13-04	Ростов-на-Дону (863)308-18-15	Тюмень (3452)66-21-18
Вологда (8172)26-41-59	Липецк (4742)52-20-81	Рязань (4912)46-61-64	Ульяновск (8422)24-23-59
Воронеж (473)204-51-73	Магнитогорск (3519)55-03-13	Самара (846)206-03-16	Уфа (347)229-48-12
Екатеринбург (343)384-55-89	Москва (495)268-04-70	Санкт-Петербург (812)309-46-40	Хабаровск (4212)92-98-04
Иваново (4932)77-34-06	Мурманск (8152)59-64-93	Саратов (845)249-38-78	Челябинск (351)202-03-61
Ижевск (3412)26-03-58	Набережные Челны (8552)20-53-41	Севастополь (8692)22-31-93	Череповец (8202)49-02-64
Иркутск (395)279-98-46	Нижний Новгород (831)429-08-12	Симферополь (3652)67-13-56	Ярославль (4852)69-52-93
Россия (495)268-04-70	Киргизия (996)312-96-26-47	Казахстан (7172)727-132	

75X
STRONGER

The Indestructible Handle Hammer Technology

STEEL LOCKING PLATE

locks head to the handle
eliminating loosening or
dislodging

HI-VISIBILITY HEAD

instant identification on
any job site

VULCANIZED RUBBER HANDLE

Absorbs impact &
vibration, reducing user
fatigue

Protects user in the event
of striking an electrical wire

Made from special grade
of ozone resistant rubber
for use in tough outside
environments

Handles on most head sizes
weigh more than the head,
allowing user to apply
double the torque on any
struck surface

DROP FORGED HEAD

with striking
ends induction
hardened
(50-58 HRC)

SPRING STEEL BARS

9/32" (7.1 mm) dia.
spring steel bars
resist overstrike
without breaking

STEEL REINFORCED LANYARD HOLE



OUTSTANDING DURABILITY

In our desire to build the world's strongest Sledge Hammer, we tested our Indestructible Handle Sledge Hammer against Sledges with different handles. We attached each Sledge to an Electronic drive machine & tested for both Direct & Overstrikes at a strike rate of 80 blows per minute

WE STOPPED COUNTING AFTER

36,000

STRIKES WITH NO INDICATION OF DEFORMATION IN BOTH DIRECT & OVERSTRIKE TESTS

FIBRE GLASS HAMMER BROKE IN

7,000

STRIKES IN DIRECT STRIKE TEST & 4,126 STRIKES IN OVERSTRIKE TEST

WOOD HAMMER BROKE IN

450

STRIKES IN DIRECT STRIKE TEST & 208 STRIKES IN OVERSTRIKE TEST

THE RESULT

The GROZ Indestructible Handle Hammers come with a 12 month warranty. These are designed to ensure that the hammer handle will not break/separate from the hammer head under normal wear & tear. Warranty does not cover use of the hammer other than as a hand-held striking tool, nor to breakage/mushrooming etc. of the hammer head

Indestructible handle is made up of 4 spring steel bars that run all the way through the handle.

Bars are locked with the hammer head using steel locking plates ensuring that the head never gets dislodged.

Ergonomic rubber grip handle absorbs vibration and reduces fatigue.

Special bonding process ensures that the head never gets loose from the handle.

These are available in 2 types:

Heavy Duty 50-58 HRC Head*

Forged from special steel, the hammer head is induction case hardened 50-58 HRC. These hammers are especially useful in demolition work where the struck surface is softer than the hammer head

UTILITY

- Driving in stakes
- Metal-forming
- Setting bolts
- Minor demolition work

Soft Face 30 HRC Head

Forged from special steel, the hammer head is induction case hardened & then tempered to reduce hardness to within 30-35 HRC. Softer head is designed to mushroom when striking harder base materials. Prevents damage to struck work pieces

UTILITY

- Construction
- Metal forming
- Over ground mining
- Maintenance of cutting tools



Heavy Duty
52 HRC Head



Soft Face
30 HRC Head

PATENT
PENDING



Steel Locking Plate



4 Spring Steel Bars



Ergonomic Rubber Grip
Handle



WARNING*

Do not strike objects harder than 46 HRC. Striking items of a greater hardness is liable to cause fracture or chipping

ORDERING INFORMATION

CAT NR.	ORD NR.	HEAD WEIGHT		OVERALL LENGTH	
		(LBS)	(KG)	(INCH)	(MM)
HEAVY DUTY 52 HRC HEAD					
*CHID/2.5/12	34500	2.5	1.1	12	300
CHID/2.5/16	34505	2.5	1.1	16	400
*CHID/4/12	34501	4	1.8	12	300
CHID/4/16	34502	4	1.8	16	400
SOFT FACE 30 HRC HEAD					
CHID/SF/2.5/12	34550	2.5	1.1	12	300
CHID/SF/4/12	34551	4	1.8	12	300

* Best Seller

BS 876

For material, hardness & performance

SANS 387:2014



WORKING TEMPERATURE
RANGE

-10°C TO 50°C
(14°F TO 122°F)

Indestructible handle is made up of 6 spring steel bars that run all the way through the handle.

Bars are locked with the hammer head using steel locking plates ensuring that the head never gets dislodged.

Ergonomic rubber grip handle absorbs vibration and reduces fatigue.

Special bonding process ensures that the head never gets loose from the handle.

These are available in 2 types:

Heavy Duty 50-58 HRC Head*

Forged from special steel, the hammer head is induction case hardened 50-58 HRC. These hammers are especially useful in demolition work where the struck surface is softer than the hammer head. These are also available with a short handle (12-16" length), especially useful in automotive applications

UTILITY

- Driving in stakes
- Heavy demolition work
- Construction: fracturing stone & concrete
- Driving fence posts
- Police, fire & rescue
- Rebar work
- Railroads
- Bending & shaping metal



Heavy Duty
52 HRC Head

PATENT
PENDING

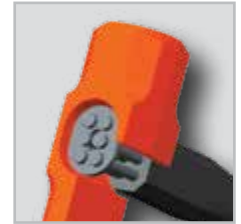
Soft Face
30 HRC Head

Soft Face 30 HRC Head:

Forged from special steel, the hammer head is induction case hardened & then tempered to reduce hardness to within 30-35 HRC. Softer head is designed to mushroom when striking harder base materials. Prevents damage to struck work pieces.

UTILITY

- Construction
- Agriculture
- Automotive
- Overground mining
- Railroad
- Maintenance of cutting tools



Steel Locking Plate



6 Spring Steel Bars



Ergonomic Rubber Grip Handle



BS 876

For material, hardness & performance

SANS 387:2014

ORDERING INFORMATION

CAT NR.	ORD NR.	HEAD WEIGHT		OVERALL LENGTH	
		(LBS)	(KG)	(INCH)	(MM)
HEAVY DUTY 52 HRC HEAD					
SHID/6/16	34521	6	2.7	16	400
SHID/6/24	34510	6	2.7	24	600
SHID/6/30	34511	6	2.7	30	750
SHID/8/12	34522	8	3.6	12	300
SHID/8/16	34523	8	3.6	16	400
*SHID/8/24	34512	8	3.6	24	600
*SHID/8/30	34513	8	3.6	30	750
SHID/8/36	34517	8	3.6	36	900
SHID/10/30	34514	10	4.5	30	750
SHID/10/36	34518	10	4.5	36	900
SHID/12/30	34515	12	5.5	30	750
SHID/12/36	34519	12	5.5	36	900
*SHID/14/30	34516	14	6.3	30	750
SHID/14/36	34520	14	6.3	36	900
◆SHID/20/36	34524	20	9	36	900

WARNING*

Do not strike objects harder than 46 HRC. Striking items of a greater hardness is liable to cause fracture or chipping

WORKING TEMPERATURE RANGE

-10°C TO 50°C
(14°F TO 122°F)

CAT JNR.	ORD NR.	HEAD WEIGHT		OVERALL LENGTH	
		(LBS)	(KG)	(INCH)	(MM)
SOFT FACE 30 HRC HEAD					
SHID/SF/6/30	34560	6	2.7	30	750
SHID/SF/8/30	34561	8	3.6	30	750
SHID/SF/10/30	34562	10	4.5	30	750
SHID/SF/12/30	34563	12	5.5	30	750
SHID/SF/14/36	34565	14	6.3	36	900

- ◆ New
- * Best Seller

Indestructible handle is made up of 6 spring steel bars that run all the way through the handle.

Forged steel head is induction case hardened 50-58 HRC.

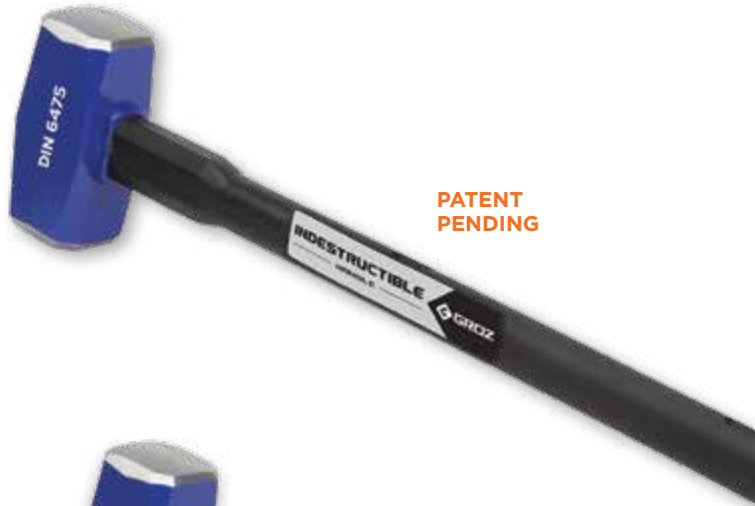
Bars are locked with the hammer head using steel locking plates ensuring that the head never gets dislodged.

Ergonomic rubber grip handle absorbs vibration and reduces fatigue.

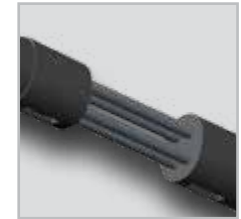
Special bonding process ensures that the head never gets loose from the handle.

UTILITY

- Demolition
- Driving stakes & rebar
- Fracturing stone & concrete
- Driving fence posts
- Rail road
- Bending & shaping metal



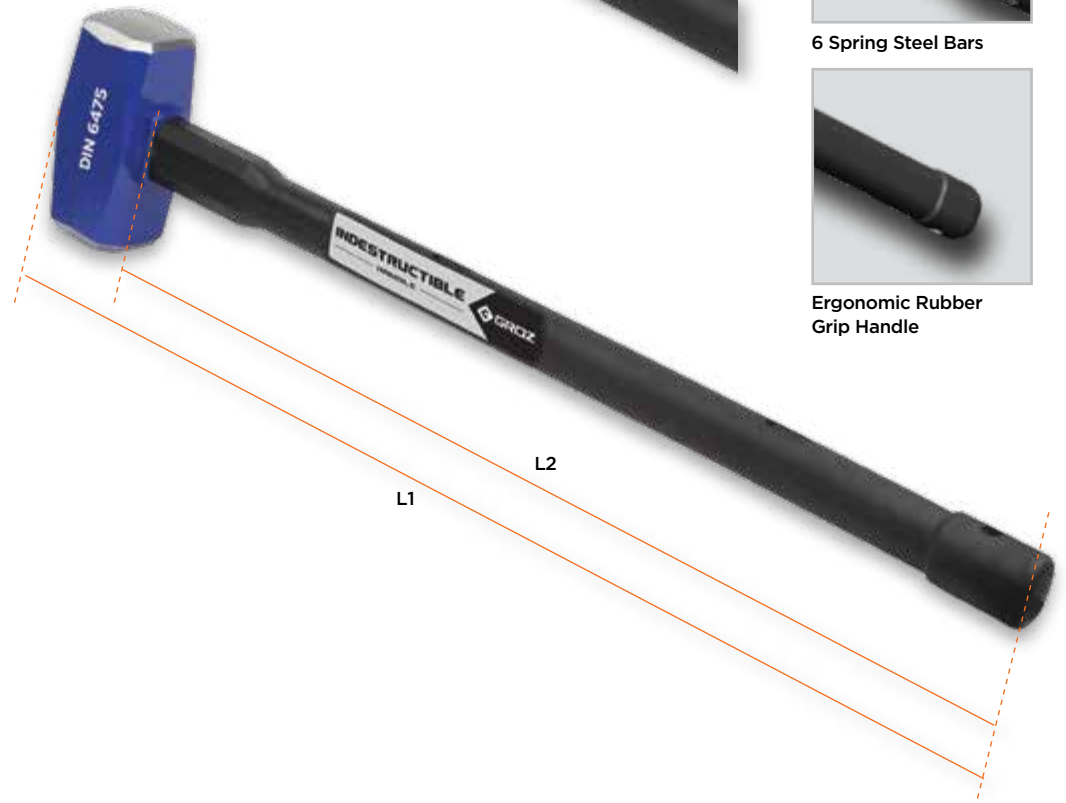
Steel Locking Plate



6 Spring Steel Bars



Ergonomic Rubber Grip Handle



CONFORMS TO
DIN 6475

WARNING

Do not strike objects harder than 46 HRC. Striking items of a greater hardness is liable to cause fracture or chipping

ORDERING INFORMATION

CAT NR.	ORD NR.	HEAD WEIGHT		HANDLE LENGTH			
				L1		L2	
		(GMS)	(KG)	(INCH)	(MM)	(INCH)	(MM)
SHID/DIN/3K/24	34720	3000	3	24	600	22	550
SHID/DIN/5K/30	34721	5000	5	30	750	28	695

WORKING TEMPERATURE RANGE
-10°C TO 50°C
(14°F TO 122°F)

85

Copper Head Sledge Hammers

CHID-CU

SHID-CU

Indestructible handle is made with spring steel bars that run all the way through the handle.

Bars are locked with the hammer head using steel locking plates ensuring that the head never gets dislodged.

Ergonomic rubber grip handle absorbs shock & vibration reducing fatigue.

Special bonding process ensures that head never gets loose from the handle.

Hammer head is forged from 99.9% pure copper for spark free use. Copper head resists sparking & reduces marring of most struck surfaces

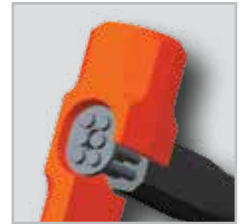
UTILITY

- Metal forming
- Mining
- Underground coal mining

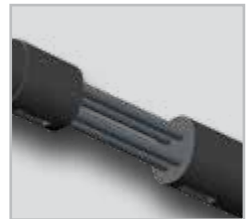


Spark Resistant!

PATENT PENDING






Steel Locking Plate



4 - 6 Spring Steel Bars



Ergonomic Rubber Grip Handle

MATERIAL	HARDNESS	NON SPARKING	NON MARRING
Cu COPPER	 85 HV		

ORDERING INFORMATION

CAT NR.	ORD NR.	HEAD WEIGHT		OVERALL LENGTH	
		(LBS)	(KG)	(INCH)	(MM)
CHID/2.5/12/CU	34602	2.5	1.1	12	300
CHID/2.5/16/CU	34603	2.5	1.1	16	400
*CHID/4/12/CU	34600	4	1.8	12	300
CHID/4/16/CU	34604	4	1.8	16	400
*SHID/8/24/CU	34610	8	3.6	24	600
*SHID/14/30/CU	34611	14	6.3	30	750

* Best Seller

WORKING TEMPERATURE RANGE

-10°C TO 50°C
(14°F TO 122°F)

Indestructible handle is made with spring steel bars that run all the way through the handle.

Bars are locked with the hammer head using steel locking plates ensuring that the head never get dislodged

Ergonomic rubber grip handle absorbs shocks & vibration hence reducing fatigue

Drop forged brass head is spark resistant. It absorbs impact & reduces damage on the surface being hit. Also it can be used safely in combustible environments

UTILITY

- Oil Rigs
- Gas Industry
- Automotive applications where the struck surface is soft

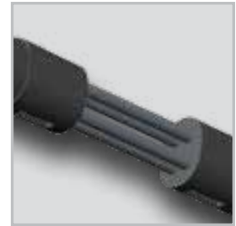


Mar Resistant Head

PATENT PENDING



Steel Locking Plate






4 Spring Steel Bars



Ergonomic Rubber Grip Handle



MATERIAL	HARDNESS	NON SPARKING	NON MARRING
Br BRASS	 130 HV		

ORDERING INFORMATION

CAT NR.	ORD NR.	HEAD WEIGHT		OVERALL LENGTH	
		(LBS)	(KG)	(INCH)	(MM)
*SHID/2.5/12/BR	34700	2.5	1.1	12	300
SHID/2.5/16/BR	34701	2.5	1.1	16	400
*SHID/4/12/BR	34702	4	1.8	12	300
SHID/4/16/BR	34703	4	1.8	16	400

* Best Seller

WORKING TEMPERATURE RANGE

-10°C TO 50°C
(14°F TO 122°F)

Indestructible handle is made up of 2 spring steel bars that run all the way through the handle.

Forged steel head is induction case hardened 50- 58 HRC.

Head features an octagonal face with bevelled edges & a 45° angular cross pein

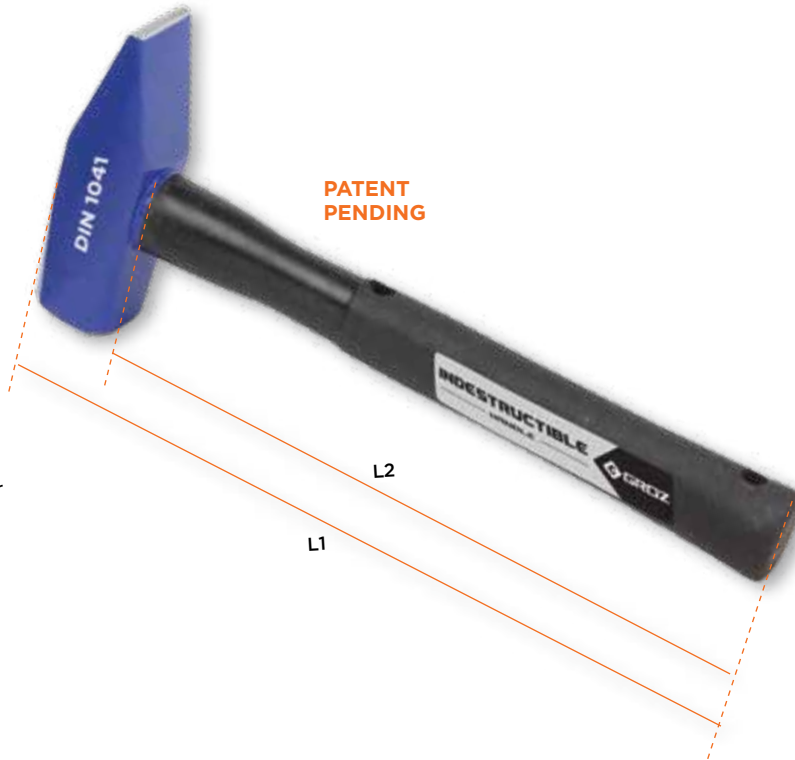
Bars are locked with the hammer head using steel locking plates ensuring that the head never gets dislodged.

Ergonomic rubber grip handle absorbs vibration and reduces fatigue.

Special bonding process ensures that the head never gets loose from the handle.

UTILITY

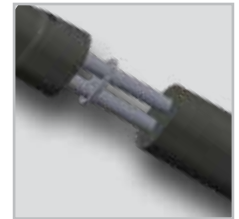
- Riveting
- Forging
- Shaping & flattening of metal
- Embossing
- Removal of dents
- Jewellery application



PATENT PENDING



Steel Locking Plate



2 Spring Steel Bars



Ergonomic Rubber Grip Handle

CONFORMS TO

DIN 1041

WARNING

Do not strike objects harder than 46 HRC. Striking items of a greater hardness is liable to cause fracture or chipping

ORDERING INFORMATION

CAT NR.	ORD NR.	HEAD WEIGHT		HANDLE LENGTH			
				L1		L2	
		(GMS)	(KG)	(INCH)	(MM)	(INCH)	(MM)
MHID/DIN/300G/13	34710	300	0.3	13	330	12	300
MHID/DIN/500G/13	34711	500	0.5	13	330	12	300
MHID/DIN/800G/14	34712	800	0.8	14	350	12-19/32	320
MHID/DIN/1000G/14	34713	1000	1	14	350	12-19/32	320

WORKING TEMPERATURE RANGE

-10°C TO 50°C
(14°F TO 122°F)

88

Ball Pein Hammers

BPID

Handle is made with spring steel bars that run all the way through the handle.

Bars are locked with the hammer head using steel locking plates ensuring that the head never gets dislodged.

Ergonomic rubber grip handle absorbs shock & vibration reducing fatigue. Special bonding process ensures that head never gets loose from the handle.

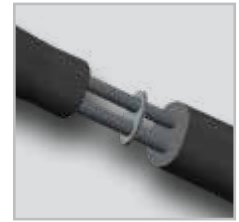
UTILITY

- Bending & shaping metal
- Driving punches & chisels
- Concrete & stone work
- Hand forging
- Setting rivets
- Peen riveted & welded material
- Texturing face of metal

WARNING

Do not strike objects harder than 46 HRC. Striking items of a greater hardness is liable to cause fracture or chipping

Hammer head is forged from special steel and is induction case hardened to 50-58 HRC for extended life.



2 Spring Steel Bars



PATENT PENDING

ORDERING INFORMATION

CAT NR.	ORD NR.	HEAD WEIGHT		OVERALL LENGTH	
		(GMS)	(OZ)	(INCH)	(MM)
◆BPID/16/14	34538	450	16	14	350
◆BPID/20/14	34539	565	20	14	350
★BPID/24/14	34540	680	24	14	350
★BPID/32/14	34541	900	32	14	350
BPID/48/14	34542	1360	48	14	350

◆ New ★ Best Seller

BS 876

For material, hardness & performance



WORKING TEMPERATURE RANGE

-10°C TO 50°C
(14°F TO 122°F)

89

Cross Pein Hammers

CPID

Indestructible 16" (400 mm) long handle is made with 4 spring steel bars that run all the way through the handle.

Bars are locked with the hammer head using steel locking plates ensuring that the head never gets dislodged.

Ergonomic rubber grip handle absorbs shock & vibration reducing fatigue.

Special bonding process ensures that head never gets loose from the handle.

Hammer head is forged from special steel & is induction case hardened to 50-58 HRC for extended life

UTILITY

- Heavy Forging
- Bending & Shaping Metal
- Spreading Metal
- Driving Punches & Chisels
- Driving Masonry Drills
- Concrete & Stone Work
- Starting Panel Pins & Tacks

WARNING

Do not strike objects harder than 46 HRC. Striking items of a greater hardness is liable to cause fracture or chipping



4 Spring Steel Bars



PATENT PENDING

ORDERING INFORMATION

CAT NR.	ORD NR.	HEAD WEIGHT		OVERALL LENGTH	
		(LBS)	(KG)	(INCH)	(MM)
CPID/2/16	34530	2.5	1.15	16	400
★CPID/3/16	34531	3.5	1.60	16	400

★ Best Seller



WORKING TEMPERATURE RANGE

-10°C TO 50°C
(14°F TO 122°F)

90

Claw Hammer

CLID

Indestructible 13" (330 mm) long handle is made with 2 spring steel bars that run all the way through the handle.

Bars are locked with the hammer head using steel locking plates ensuring that the head never gets dislodged

Hammer Head is forged from special steel & induction case hardened 50-58 HRC for extended life

Well shaped, curved claw is tapered for maximum grip & higher leverage when gripping a nail

Special bonding process ensures that the head never gets loose from the handle

Ergonomic rubber grip handle absorbs shock & vibration reducing fatigue

UTILITY

- Pulling Out Nails
- Lifting Floorboards
- Carpentry Work



PATENT
PENDING



Steel Locking Plate



2 Spring Steel Bars



Ergonomic Rubber Grip Handle

WARNING

Do not strike objects harder than 46 HRC. Striking items of a greater hardness is liable to cause fracture or chipping

Do not use a claw hammer for striking cold chisels or for pulling out masonry nails

ORDERING INFORMATION

CAT NR.	ORD NR.	HEAD WEIGHT		OVERALL LENGTH	
		(OZ)	(GMS)	(INCH)	(MM)
CLID/16/13	34535	16	450	13	330

BS 876

For material, hardness & performance



WORKING TEMPERATURE RANGE

-10°C TO 50°C
(14°F TO 122°F)

NEW!

A unique tyre & wheel service hammer used for separating tyres from wheel rims.

Often the tyre bead gets frozen/stuck to the rim due to corrosion/rust and must be broken free manually.

Tyre Bead Hammer is ideal for use in such applications.

Used like a chisel it leverages mechanical advantage to drive the bead away from the rim.

The fully forged hammer head incorporates:

- Bead breaking Wedge: Convex shape wedge penetrates the tyre bead effectively. Groove on the convex shape creates easy passage for the tyre lube into the bead.
- Top hook: is used as a wheel tipper to break the bead on the other side of the wheel
- Sledge edge: has a hook to drag the tyre into position

Indestructible handle is made from spring steel bars that runs through the handle.

Bars are locked with the hammer head using steel locking plates ensuring that the head never gets dislodged

Ergonomic rubber grip handle absorbs vibrations & reduces fatigue

Special bonding process ensures that the head never gets loose from the handle.



Convex shaped wedge penetrates the tyre bead & loosens it



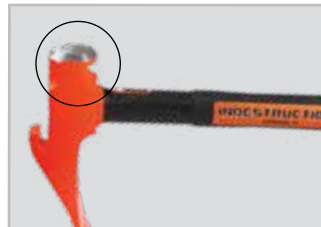
Steel Locking Plate



Top Hook used to tip wheel to change sides



Spring Steel Bars



Sledge Edge with a hook to drag tyre into position



Ergonomic Rubber Grip Handle

WORKING TEMPERATURE RANGE

-10°C TO 50°C
(14°F TO 122°F)

ORDERING INFORMATION

CAT NR.	ORD NR.	HEAD WEIGHT		OVERALL LENGTH		SPRING STEEL BARS
		(LBS)	(KG)	(INCH)	(MM)	
TBID/5/20	34750	5	2.2	20	500	4
TBID/10/32	34751	10	4.5	32	800	6

Our best selling hammers now available in an easy to store & carry - blow mould case.

Choice of 2 kits, ideal for automotive, construction & everyday maintenance jobs

Indestructible Handle hammers feature

- a. Spring Steel bars - Run through the hammer handle & eliminate handle breaking due to an over-strike
- b. Steel Locking Plate - Locks hammer head to the handle eliminating loosening or dislodging
- c. Non Slip Vulcanized Rubber handle - Absorbs impact & vibration reducing user fatigue
- d. Drop Forged Steel Head Induction hardened to 50-58 HRC
- e. Lanyard hole - safely secures hammer to wrist or any other surface



Blow Mould Case

KIT CONSTITUENTS

TYPE	KIT/HMID/3S/ST	KIT/HMID/3/ST
Club / Sledge Hammer	2-1/2 lb (1.1 kg) Hammer Head x 12" (300 mm) long	4 lb (1.8 kg) Hammer Head x 12" (300 mm) long
Ball Pein Hammer	24 oz. (0.684 kg) Hammer Head x 14" (350 mm) long	32 oz. (0.912 kg) Hammer Head x 14" (350 mm) long
Cross Pein Hammer	2-1/2 lb. (1.1 kg) Hammer Head x 16" (400 mm) long	2-1/2 lb. (1.1 kg) Hammer Head x 16" (400 mm) long

WORKING TEMPERATURE RANGE

-10°C TO 50°C
(14°F TO 122°F)

HARDNESS CONFORMS TO



50-58
HRC

ANSI

ORDERING INFORMATION

CAT NR.	ORD NR.
KIT/HMID/3S/ST	34575
KIT/HMID/3/ST	34576

WARNING

Do not strike objects harder than 46 HRC. Striking items of a greater hardness is liable to cause fracture or chipping

D7 Merchandise Stand

3 pc Club & Sledge Hammer
wooden display stand



Supplied without
hammers

ORDERING INFORMATION

CAT NR.	ORD NR.	STAND DIMENSIONS	
		(INCH)	(MM)
D7	00506	16.14 x 5.91 x 3.74	410 x 150 x 95

D12 Merchandise Stand

All metal display stand for
displaying 16 hammers

Top & bottom display /
branding area

Easy to bolt assembly

Supplied in CKD form



Supplied without
hammers

ORDERING INFORMATION

CAT NR.	ORD NR.	STAND DIMENSIONS	
		(INCH)	(MM)
D12	00512	18.11 x 53.93 x 23.62	460 x 1370 x 600



	CLUB HAMMERS	SLEDGE HAMMERS (6 TO 10 LBS)
Construction: Fracturing Stone & Concrete		Y
Minor Demolition Work	Y	
Heavy Demolition Work		Y
Driving Fence Posts		Y
Driving in Stakes	Y	Y
Setting Bolts	Y	
Rebar Work		Y
Railroads		Y
Police , Fire & Rescue		Y
Concrete & Stone Work		
Driving Masonry Drills	Y	
Mining		
Underground Coal Mining		
Metalforming	Y	
Heavy Forging		
Hand Forging		
Bending & Shaping Metal		
Spreading Metal		
Texturing face Of Metal		
Starting Panel pins & tacks		
Setting Rivets		
Peen Riveted & Welded Material		
Driving Punches & Chisels	Y	
Garages - Small Scale		
Workshops		
Service Centre		
Off Shore		
Shipping & Marine		
Woodworking		

USE THE RIGHT HAMMER FOR THE RIGHT APPLICATION

	SLEDGE HAMMERS (12 TO 20 LBS)	SLEDGE HAMMERS (DIN6475)	COPPER HEAD SLEDGE HAMMERS	BRASS HEAD SLEDGE HAMMERS	MACHINIST HAMMERS DIN 1041	SOFT FACE HAMMERS	BALL PEIN HAMMERS	CROSS PEIN HAMMERS	CLAW HAMMERS	TYRE BEAD BREAKER HAMMERS
	Y	Y				Y				Y
	Y	Y								
	Y	Y								
	Y	Y								
	Y	Y								
	Y	Y				Y				
	Y	Y								Y
										Y
	Y	Y	Y	Y		Y				
			Y	Y						
			Y	Y		Y				
								Y		
					Y	Y	Y			
					Y	Y	Y	Y		
								Y		
					Y	Y	Y			
								Y		
					Y	Y	Y			Y
					Y	Y	Y	Y		Y
					Y	Y	Y	Y		Y
			Y	Y						
			Y	Y						
								Y		

T

Carbon steel single piece construction with hexagonal shank

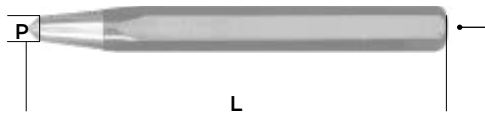
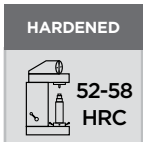
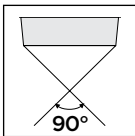
Accurately hardened and tempered so that the point will withstand continuous use and the striking end will not splinter.

Working tip centred and ground to the correct angle (90° included angle) for increased efficiency in marking

Working end accurately ground with the punch body in premium powder coated finish

Striking end is chamfered to prevent breakage

Ideal for clearly marking metal in work layout & making indentations in a work piece before drilling to ensure correct location of drill points.



CP/HD/5/ST

ORDERING INFORMATION

CAT NR.	ORD NR.	POINT SIZE (P)		STOCK SIZE		OVERALL LENGTH (L)	
		(INCH)	(MM)	(INCH)	(MM)	(INCH)	(MM)
CP/HD/5-64	25200	5/64	2	1/4	6	3.1/2	90
CP/HD/1-8	25201	1/8	3	5/16	8	4.1/4	108
*CP/HD/5-32	25202	5/32	4	3/8	10	5	125
CP/HD/5-32/SPL	25206	5/32	4	5/16	8	5.1/2	138
*CP/HD/1-4	25203	1/4	6	1/2	12	6	150
CP/HD/1-4/SPL	25207	1/4	6	3/8	10	6	150
CP/HD/3-8	25204	3/8	10	5/8	16	6.1/4	160
SET							
CP/HD/5/ST	25205	A set of 5 Centre Punches packed in a vinyl pouch					
		5/64" (2mm)	1/8" (3mm)	5/32" (4mm)	1/4" (6mm)	3/8" (10mm)	

* Best Seller

Centre Punches Round Head

Carbon steel single piece construction with round shank and round striking head

Accurately hardened and tempered so that the point will withstand continuous use and the striking end will not splinter

Clean and well cut knurling for non-slip and positive finger grip

Working tip centred and ground to the correct angle (90° included angle) for increased efficiency in marking

Rust inhibiting black oxide finish

Ideal for clearly marking metal in work layout & making indentations in a work piece before drilling to ensure correct location of drill points.



ORDERING INFORMATION

CAT NR.	ORD NR.	POINT SIZE		BODY DIAMETER		OVERALL LENGTH (L)	
		(INCH)	(MM)	(INCH)	(MM)	(INCH)	(MM)
CP/1-16	25100	1/16	1.5	1/4	6	3	75
*CP/5-64	25101	5/64	2	5/16	8	4	100
CP/3-32	25102	3/32	2.5	5/16	8	4	100
CP/1-8	25103	1/8	3	5/16	8	4	100
CP/9-64	25104	9/64	3.5	5/16	8	4	100
*CP/5-32	25105	5/32	4	3/8	10	4	100
CP/3-16	25106	3/16	5	3/8	10	4	100
CP/7-32	25107	7/32	5.5	3/8	11	4	100
*CP/1-4	25108	1/4	6	7/16	11	5	125
CP/1-4/SPL	25111	1/4	6	1/2	13	5	100

SETS

*CP/5/ST	25109	A Set of 5 Centre Punches packed in a vinyl pouch					
		1/16" (1.5mm)	5/64" (2mm)	3/32" (2.5mm)	9/64" (3.5mm)	5/32" (4mm)	
CP/5/1-8/ST	25110	A Set of 5 Centre Punches packed in a vinyl pouch					
		1/16" (1.5mm)	5/64" (2mm)	3/32" (2.5mm)	1/8" (3mm)	5/32" (4mm)	
*CP/8/WD/ST	25120	A Set of 8 Centre Punches packed to a wooden box					
		1/16" (1.5mm)	5/64" (2mm)	3/32" (2.5mm)	1/8" (3mm)	9/64" (3.5mm)	5/32" (4mm)
		3/16" (5mm)	7/32" (5.5mm)				

* Best Seller



CP/5/ST



CP/8/WD/ST

Pin Punches Heavy Duty

Carbon steel single piece construction with hexagonal shank

Accurately hardened and tempered so that the Pin will withstand continuous use and the striking end will not splinter.

Induction hardened to ensure consistent hardness and a special tempering process prevents the head from fracturing, thereby preventing accidents.

Working ends are accurately ground and the punch body is in premium powder coated finish

Available in two types:

a. Regular

b. Extra long

These are especially useful for applications that require additional leverage



ORDERING INFORMATION

CAT NR.	ORD NR.	PIN DIAMETER (D)		STOCK SIZE		OVERALL LENGTH (L)		
		(INCH)	(MM)	(INCH)	(MM)	(INCH)	(MM)	
REGULAR								
PP/HD/1-16	25600	1/16	1.5	1/4	6	4	100	
*PP/HD/3-32	25601	3/32	2.5	5/16	8	4.1/2	112	
PP/HD/3-32/SPL	25609	3/32	2.5	1/4	6	4.1/4	106	
*PP/HD/1-8	25602	1/8	3	5/16	8	4.3/4	119	
*PP/HD/5-32	25603	5/32	4	5/16	8	5	125	
*PP/HD/3-16	25604	3/16	5	3/8	10	5.1/4	132	
PP/HD/3-16/SPL	25610	3/16	5	5/16	8	5.1/4	132	
PP/HD/7-32	25605	7/32	5.5	3/8	10	5.1/2	138	
*PP/HD/1-4	25606	1/4	6	3/8	10	5.3/4	145	
PP/HD/5-16	25607	5/16	8	7/16	11	6	150	
PP/HD/3-8	25608	3/8	10	1/2	12	6.1/2	163	
EXTRA LONG								
*PP/HD/1-8L	25650	1/8	3	5/16	8	8	200	
*PP/HD/3-16L	25651	3/16	5	3/8	10	8	200	
*PP/HD/1-4L	25652	1/4	6	3/8	10	8	200	
PP/HD/5-16L	25653	5/16	8	7/16	11	8	200	
PP/HD/3-8L	25654	3/8	10	1/2	12	8	200	
SETS - REGULAR								
PP/HD/6/ST	25612	A set of 6 Pin Punches containing packed in a vinyl pouch						
		3/32" (2.5mm)	1/8" (3mm)	5/32" (4mm)	3/16" (5mm)	1/4" (6mm)	5/16" (8mm)	
*PP/HD/7/ST	25611	A set of 7 Pin Punches packed in a vinyl pouch						
		1/16" (1.5mm)	3/32" (2.5mm)	1/8" (3mm)	5/32" (4mm)	3/16" (5mm)	7/32" (5.5mm)	1/4" (6mm)
SETS - EXTRA LONG								
PP/HD/5L/ST	25655	A set of 5 extra long Pin Punches packed in a vinyl pouch						
		1/8" (3mm)	3/16" (5mm)	1/4" (6mm)	5/16" (8mm)	3/8" (10mm)		

* Best Seller



PP/HD/6/ST



PP/HD/7/ST

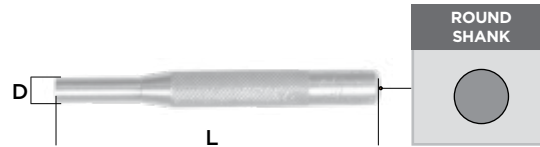


PP/HD/5L/ST

Manufactured from solid brass, these non-marring punches are ideal for delicate work on soft materials as these do not cause damage to the material being worked upon

Also used to produce a gentle initial movement with a steel punch being used later to complete the job

Available in 2 lengths:
a. 4" (100 mm)
 Solid Brass construction
b. 8" (200 mm)
 2pc construction with body in steel & punch in brass



ORDERING INFORMATION

BRASS PIN PUNCHES – 4" (100 MM LONG)

CAT NR.	ORD NR.	PIN DIAMETER (D)		BODY DIAMETER	
		(INCH)	(MM)	(INCH)	(MM)
PP/1-16B	26760	1/16	1.5	9/32	7
PP/3-32B	26761	3/32	2.5	9/32	7
PP/1-8B	26762	1/8	3.0	9/32	7
PP/5-32B	26763	5/32	4.0	9/32	7
PP/3-16B	26764	3/16	5.0	5/16	8
PP/7-32B	26765	7/32	5.5	5/16	8
PP/1-4B	26766	1/4	6.0	3/8	10
PP/5-16B	26767	5/16	8.0	7/16	11

BRASS PIN PUNCHES – 8" (200 MM LONG)

DPP/1-8B	26752	1/8	3.0	3/8	10
DPP/3-16B	26754	3/16	5.0	1/2	12
DPP/1-4B	26755	1/4	6.0	1/2	12
DPP/5-16/B	26756	5/16	8.0	1/2	12
DPP/3-18B	26757	3/8	10.0	1/2	12

SETS - BRASS PIN PUNCHES – 4" (100 MM LONG)

PP/4B/ST	26768	A set of 4 brass pin punches packed to a vinyl pouch							
		1/8" (3mm)	5/32" (4mm)	3/16" (5mm)	1/4" (6mm)				
PP/8B/ST	26769	A set of 8 brass pin punches packed to a vinyl pouch							
		1/16" (1.5mm)	3/32" (2.5mm)	1/8" (3mm)	5/32" (4mm)	3/16" (5mm)	7/32" (5.5mm)	1/4" (6mm)	5/16" (8mm)
PP/8B/WD/ST	26770	A Set of 8 packed to a wooden box							
		1/16" (1.5mm)	3/32" (2.5mm)	1/8" (3mm)	5/32" (4mm)	3/16" (5mm)	7/32" (5.5mm)	1/4" (6mm)	5/16" (8mm)

BRASS PIN PUNCHES – 8" (200 MM LONG)

DPP/5B/ST	26758	A set of 5 brass pin punches packed to a vinyl pouch				
		1/8" (3mm)	3/16" (5mm)	1/4" (6mm)	5/16" (8mm)	3/8" (10mm)



PP/4B/ST



PP/8B/ST

Carbon steel construction with round shank and square striking head

Accurately hardened and tempered so that the pin will withstand continuous use and the striking end will not splinter

Clean and well cut knurling for non-slip and positive finger grip

Rust inhibiting black oxide finish

These are available in 3 different lengths:

- a. Pin Punches 4" (100 mm) long:**
Single piece construction with 1" (25 mm) long pin.
- b. Pin Punches 6" (150 mm) long:**
Single piece construction with 1.3/4" (45 mm) long pin.
- c. Pin Punches 8" (200 mm) long:**
Two piece construction with a 3.3/4" (90 mm) long pin. The two piece construction allows the pin to have a separate hardness from the body which prevents "peening" and also ensures complete straightness over such a long length.



Pin Punches are used for driving out and removing already loosened pins & keys after initial movement by a solid or starting punch



ORDERING INFORMATION

PIN PUNCHES — 4" (100 MM LONG)					
CAT NR.	ORD NR.	PIN DIAMETER (D)		BODY DIAMETER	
		(INCH)	(MM)	(INCH)	(MM)
*PP/1-16	25560	1/16	1.5	9/32	7
PP/3-32	25561	3/32	2.5	9/32	7
*PP/1-8	25562	1/8	3	9/32	7
*PP/5-32	25563	5/32	4	9/32	7
*PP/3-16	25564	3/16	5	5/16	8
PP/7-32	25565	7/32	5.5	5/16	8
*PP/1-4	25566	1/4	6	3/8	10
PP/5-16	25567	5/16	8	7/16	11
SETS					
*PP/4/ST	25568	A Set of 4 Pin Punches packed in vinyl pouch			
		1/8" (3mm)	5/32" (4mm)	3/16" (5mm)	1/4" (6mm)
PP/8/ST	25569	A Set of 8 Pin Punches packed in a vinyl pouch			
		1/16" (1.5mm)	3/32" (2.5mm)	1/8" (3mm)	5/32" (4mm)
		3/16" (5mm)	7/32" (5.5mm)	1/4" (6mm)	5/16" (8mm)
*PP/8/WD/ST	25580	A Set of 8 Pin Punches packed in a wooden box			
		1/16" (1.5mm)	3/32" (2.5mm)	1/8" (3mm)	5/32" (4mm)
		3/16" (5mm)	7/32" (5.5mm)	1/4" (6mm)	5/16" (8mm)

* Best Seller



PPR/6/ST



DDP/8/ST

ORDERING INFORMATION

PIN PUNCHES – 6" (150 MM LONG)					
CAT NR.	ORD NR.	PIN DIAMETER (D)		BODY DIAMETER	
		(INCH)	(MM)	(INCH)	(MM)
PPR/1-16	25540	1/16	1.5	9/32	7
*PPR/3-32	25541	3/32	2.5	9/32	7
PPR/1-8	25542	1/8	3	9/32	7
*PPR/5-32	25543	5/32	4	9/32	7
*PPR/3-16	25544	3/16	5	5/16	8
PPR/7-32	25545	7/32	5.5	5/16	8
*PPR/1-4	25546	1/4	6	3/8	10
PPR/5-16	25547	5/16	8	1/2	11
PPR/3-8	25548	3/8	9.5	1/2	12

SETS

*PPR/6/ST	25549	A Set of 6 Pin Punches packed in vinyl pouch			
		3/32" (2.5 mm)	1/8" (3mm)	5/32" (4mm)	3/16" (5mm)
		1/4" (6mm)	5/16" (8mm)		
PPR/8/ST	25550	A Set of 8 Pin Punches packed in a vinyl pouch			
		1/16" (1.5mm)	3/32" (2.5mm)	1/8" (3mm)	5/32" (4mm)
		3/16" (5mm)	7/32" (5.5mm)	1/4" (6mm)	5/16" (8mm)

* Best Seller

ORDERING INFORMATION

PIN PUNCHES – 8" (200 MM LONG)					
CAT NR.	ORD NR.	PIN DIAMETER (D)		BODY DIAMETER	
		(INCH)	(MM)	(INCH)	(MM)
DDP/1-16	25500	1/16	1.5	23/64	9
DDP/3-32	25501	3/32	2.5	3/8	10
*DDP/1-8	25502	1/8	3	3/8	10
DDP/5-32	25503	5/32	4	3/8	10
*DDP/3-16	25504	3/16	5	1/2	12
*DDP/1-4	25505	1/4	6	1/2	12
*DDP/5-16	25506	5/16	8	1/2	12
DDP/3-8	25507	3/8	9.5	1/2	12

SETS

*DDP/5/ST	25508	A Set of 5 Pin Punches packed in a vinyl pouch			
		1/8" (3mm)	3/16" (5mm)	1/4" (6mm)	5/16" (8mm)
		3/8" (9.5mm)			
*DDP/8/ST	25509	A Set of 8 Pin Punches packed in a vinyl pouch			
		1/16" (1.5mm)	3/32" (2.5mm)	1/8" (3mm)	5/32" (4mm)
		3/16" (5mm)	1/4" (6mm)	5/16" (8mm)	3/8" (9.5mm)

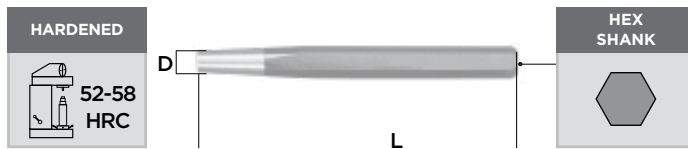
* Best Seller

Carbon steel single piece construction with hexagonal shank

Accurately hardened and tempered for extended service life

Working ends are machine ground with the body in premium powder coated finish

Used as a starting tool prior to using Pin Punches, these are useful for loosening frozen or tight pins and keys or knocking out rivets.



ORDERING INFORMATION

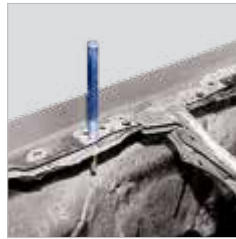
CAT NR.	ORD NR.	TIP DIAMETER (D)		STOCK SIZE		OVERALL LENGTH (L)	
		(INCH)	(MM)	(INCH)	(MM)	(INCH)	(MM)
SGP/HD/1-16	25700	1/16	1.5	3/8	10	5	125
SGP/HD/3-32	25701	3/32	2.5	3/8	10	5	125
SGP/HD/1-8	25702	1/8	3	3/8	10	5	125
SGP/HD/1-8/SPL	25720	1/8	3	5/16	8	5	125
SGP/HD/5-32	25703	5/32	4	3/8	10	5	125
SGP/HD/3-16	25704	3/16	5	3/8	10	5	125
SGP/HD/7-32	25705	7/32	5.5	3/8	10	5.1/2	140
SGP/HD/1-4	25706	1/4	6	3/8	10	5	125
SGP/HD/5-16	25707	5/16	8	1/2	12	6	150
SGP/HD/3-8	25708	3/8	9.5	5/8	16	6.1/2	165
SGP/HD/1-2	25709	1/2	12	5/8	16	7	175

Carbon steel single piece construction with hexagonal shank

Accurately hardened and tempered for extended service life

Working ends are machine ground with the body in premium powder coated finish

Used for lining up holes in 2 or more pieces of metal and for drawing pins through various assemblies, these are also referred to as "Alignment Punches".



Insert the punch into the hole, pry or twist both into alignment. Tapping gently with the long well formed taper will ensure that the holes are in perfect alignment.



ORDERING INFORMATION

CAT NR.	ORD NR.	TIP DIAMETER (D)		STOCK SIZE		OVERALL LENGTH (L)	
		(INCH)	(MM)	(INCH)	(MM)	(INCH)	(MM)
DFP/HD/3-32	25800	3/32	2.5	5/16	8	8	200
*DFP/HD/1-8	25801	1/8	3	5/16	8	8	200
*DFP/HD/5-32	25802	5/32	4	3/8	10	9	225
*DFP/HD/5-32/SPL	25822	5/32	4	1/2	13	10	250
*DFP/HD/3-16	25803	3/16	5	1/2	13	10	250
DFP/HD/3-16/SPL	25820	3/16	5	5/16	8	10	250
DFP/HD/7-32	25804	7/32	5.5	1/2	13	10	250
DFP/HD/7-32/SPL	25823	7/32	5.5	3/4	19	17.3/4	450
*DFP/HD/1-4	25805	1/4	6	5/8	16	12	300
DFP/HD/1-4/SPL	25821	1/4	6	3/8	10	10	250
DFP/HD/5-16	25806	5/16	8	3/4	19	12	300
DFP/HD/3-8	25807	3/8	9.5	3/4	19	15	375
DFP/HD/3-8/SPL	25824	3/8	9.5	5/8	16	10	250
DFP/HD/1-2	25808	1/2	12	7/8	22	18	450

SET

DFP/HD/7/ST	25809	Set of 7 Drift Punches packed in vinyl pouch						
		1/8" (3mm)	5/32" (4mm)	3/16" (5mm)	7/32" (5.5mm)	1/4" (6mm)	5/16" (8mm)	3/8" (9.5mm)

* Best Seller

Underlined sizes find use in construction for aligning scaffoldings



DFP/HD/7/ST

T

100

Brass Drift Punches

NEW!

Brass Punches are ideal for delicate work on soft materials.

Non-marring, they do not cause damage to the material being worked upon. They have a single piece construction.

Brass Drift Punches are ideal for lining up holes in 2 or more pieces of metal and for drawing pins through various assemblies. These are also referred to as "Alignment Punches".



DFP/5B/ST

ORDERING INFORMATION

CAT NR.	ORD NR.	TIP DIA (D)		OVERALL LENGTH (L)	
		(INCH)	(MM)	(INCH)	(MM)
DFP/B/6	25840	1/4	6	5-13/16	147
DFP/B/10	25841	3/8	10	5-13/16	147
DFP/B/12	25842	1/2	12	5-13/16	147
DFP/B/16	25843	5/8	16	5-13/16	147
DFP/B/19	25844	3/4	19	5-13/16	147
SET					
DFP/5B/ST	25850	A set of 5 Brass Drift Punches packed in a vinyl pouch			
		1/4" (6mm)	3/8" (10mm)	1/2" (12mm)	5/8" (16mm)

101

Roll Pin Punches

Carbon steel single piece construction with hexagonal shank

Accurately hardened and tempered for extended service life

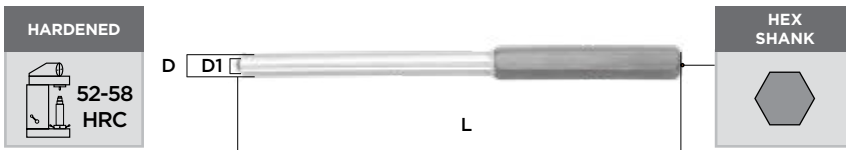
Working ends are machine ground with the body in premium powder coated finish

Chamfered striking end helps reduce mushrooming and chipping

Specifically designed to remove spring pins / roll pins. Heat treated point has a rounded ball to center the point into the pin allowing the point shoulder to maintain maximum contact with the pin during removal thus eliminating any damage to the pin or wall



Roll Pin Punch being used to remove spring pin from a gun



ORDERING INFORMATION

CAT NR.	ORD NR.	PIN DIAMETER (D)		BALL DIAMETER (D1)		OVERALL LENGTH (L)	
		(INCH)	(MM)	(INCH)	(MM)	INCH	MM
RPP/3-32	25640	3/32	2.5	1/16	1.25	3.1/2	89
RPP/1-8	25641	1/8	3	3/32	2.00	3.3/4	94
RPP/5-32	25642	5/32	4	7/64	2.75	4.1/2	114
RPP/3-16	25643	3/16	5	1/8	3.00	4.1/2	114
RPP/1-4	25644	1/4	6	5/32	4.00	5.1/2	140
RPP/5-16	25645	5/16	8	7/32	5.50	6	150

SET

		A Set of 6 Roll Pin punches packed in a vinyl pouch					
*RPP/6/ST	25646	3/32" (2.5mm)	1/8" (3mm)	5/32" (4mm)	3/16" (5mm)	1/4" (6mm)	16" (8mm)

* Best Seller

102 Hinge Centering Punch

Hinge Centering Punches are used for starting and centering screw holes when attaching countersunk hardware such as hinges, hangars, hasps, brackets, locks and drawer pulls.

Punch has a spring action with a hardened steel pin for convenient marking. The taper end of the punch ensures starting hole is correctly centered in the screw hole.

Ideal accessory for close quarter drilling



Punch being used to mark screw starting centres on a door frame



ORDERING INFORMATION

CAT NR.	ORD NR.	STOCK SIZE		OVERALL LENGTH	
		(INCH)	(MM)	(INCH)	(MM)
JCP/01	25004	3/8	10	3	78

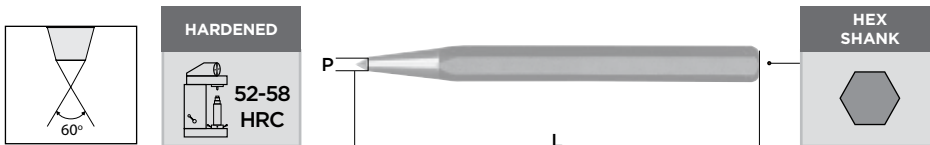
103 Prick Punches

Carbon steel single piece construction with hexagonal shank

Accurately hardened and tempered.

Working ends are accurately ground and the punch body is in premium powder coated finish

Ideal for marking metals in work layouts, these have a very sharp point (60° included angle), hence are highly suitable where very precise marking / scoring is required.



ORDERING INFORMATION

CAT NR.	ORD NR.	POINT SIZE (P)		STOCK SIZE		OVERALL LENGTH (L)	
		(INCH)	(MM)	(INCH)	(MM)	(INCH)	(MM)
PKP/HD/1-4	25450	5/64	2	1/4	6	3	75
*PKP/HD/3-8	25451	5/32	4	3/8	10	5	125
PKP/HD/1-2	25452	1/4	6	1/2	12	6	150

* Best Seller

104 Nail Punches

Carbon steel two piece construction with round shank and square striking head

Accurately hardened and tempered for extended service life

Clean and well cut knurling for non-slip and positive finger grip

3/8" (9.5 mm) square head provides a larger area for striking & also prevents the punch from rolling off.

Rust inhibiting black oxide finish

Designed for driving nail heads below the surface of wood. The working end is cupped to follow the nail head without sliding off.

These can also be used to remove nails that have an exposed point. Place the recessed tip against the point of the nail and strike the punch with a hammer to back the nail out of the hole.




NLP/SQ/3/ST



The working end is cupped to follow the nail head without sliding off

HARDENED



52-58 HRC

ORDERING INFORMATION

CAT NR.	ORD NR.	TIP DIAMETER		OVERALL LENGTH	
		(INCH)	(MM)	(INCH)	(MM)
*NLP/SQ/1-32	25360	1/32	0.80	4	100
*NLP/SQ/1-16	25361	1/16	1.5	4	100
*NLP/SQ/3-32	25362	3/32	2.5	4	100
*NLP/SQ/1-8	25363	1/8	3	4	100
NLP/SQ/5-32	25364	5/32	4	4	100
NLP/SQ/3-16	25365	3/16	5	4	100

SET

NLP/SQ/3/ST	25366	A set of 3 Nail Punches			
		1/32" (0.80mm)	1/16" (1.5mm)	3/32" (2.5mm)	

* Best Seller

105 Automatic Centre Punches

Fully automatic single hand operated spring loaded punches

No Hammering - built-in mechanism delivers a punch just with the pressing of the head.

Variable depth impression simply by turning the knurled head. Screwing the cap downwards produces heavy indentation; progressively lighter marking can be obtained by screwing the cap upwards

Once the knurled cap is set to the desired position, the punch will strike the same depth every time.

Round shank with clean and well cut knurling for positive non-slip grip.

Tips are made from hardened tool steel and can be easily removed for re-sharpening or replacement.

These are available in 3 types:

a. Automatic Centre Punch - Steel

Useful for light marking jobs

b. Automatic Centre Punch - Aluminium

Useful for light marking job

c. Automatic Centre Punch - Heavy Duty

A heavy-duty version of the above steel punch. It is capable of making very deep indentations



ORDERING INFORMATION

CAT NR.	ORD NR.	BODY MATERIAL	BODY DIAMETER		OVERALL LENGTH (L)		
			(INCH)	(MM)	(INCH)	(MM)	
AUTOMATIC CENTRE PUNCH - STEEL							
*ACP/1B	25000	Steel	1/2	13	4.3/4	120	
AUTOMATIC CENTRE PUNCH - ALUMINIUM							
ACP/77	25005	Aluminium	1/2	13	5	128	
AUTOMATIC CENTRE PUNCH - HEAVY DUTY							
ACP/78	25012	Steel	23/32	18	5.3/4	147	
TH/TIP/ACP/78	25013	Steel	Spare tip holder & replacement tip set				

* Best Seller

106 Steel Stamps

For hand held, hammer struck applications

Manufactured from select quality carbon steel.

Induction hardened, which gives durability and extended life for repeated use

Hardness at the stamping end is maintained at 58-62 HRC, the striking end is tempered to 35-42 HRC. This prevents the punch from splintering during use

The striking end is chamfered to prevent breakage and accidents due to flying splinters

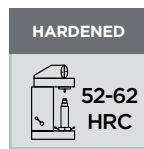
These are available in two types

a. Plastic Case

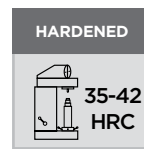
Standard Number stamps come in a plastic case with the exception of 1/2" (12 mm) which is packed to a metal case. Letter stamps come in a plastic case with the exception of 3/8" (10 mm) & 1/2" (12 mm) which are packed to a metal case.

b. Wood Case

Both Number & Letter Stamp Sets are also available in a traditional wood case.



At Stamping End



At Striking End

Indentation Actual size	E	8	E	8	E	8	E	8	E
Inch	1/16	3/32	1/8	5/32	3/16	1/4	5/16	3/8	1/2
Stamp size (mm)	1	2	3	4	5	6	8	10	12

ORDERING INFORMATION

NUMBER STAMP SET

The set contains 9 pieces, '0' - '9'. Numbers '6' & '9' are interchangeable

CAT NR.	ORD NR.	CAT NR.	ORD NR.	STAMP SIZE	
				(INCH)	(MM)
				PLASTIC / METAL CASE	WOOD CASE
NP/1	25900	NP/WD/1	25930	1/16	1
NP/2	25901	NP/WD/2	25931	3/32	2
*NP/3	25902	NP/WD/3	25932	1/8	3
NP/4	25903	NP/WD/4	25933	5/32	4
*NP/5	25904	NP/WD/5	25934	3/16	5
*NP/6	25905	NP/WD/6	25935	1/4	6
NP/8	25906	NP/WD/8	25936	5/16	8
NP/10	25907	NP/WD/10	25937	3/8	10
NP/12	25908	NP/WD/12	25938	1/2	12

* Best Seller

LETTER STAMP SET

The set contains 27 pieces, alphabets 'A' through 'Z' and ampersand '&'

CAT NR.	ORD NR.	CAT NR.	ORD NR.	STAMP SIZE	
				(INCH)	(MM)
				PLASTIC / METAL CASE	WOOD CASE
LP/1	26100	LP/WD/1	26130	1/16	1
LP/2	26101	LP/WD/2	26131	3/32	2
*LP/3	26102	LP/WD/3	26132	1/8	3
LP/4	26103	LP/WD/4	26133	5/32	4
*LP/5	26104	LP/WD/5	26134	3/16	5
*LP/6	26105	LP/WD/6	26135	1/4	6
LP/8	26106	LP/WD/8	26136	5/16	8
LP/10	26107	LP/WD/10	26137	3/8	10
LP/12	26108	LP/WD/12	26138	1/2	12

* Best Seller

Ideal for punching round holes in gasket material, leather, rubber, canvas, cardboard, plastic & other soft material.

Special design of the cutting edge prevents jamming of material inside the punch. Cutting edge is induction hardened for extended working life.

These are built in two different styles:

a. Hollow Punches

- Machined single piece steel cylindrical construction
- Designed to cut small holes ranging from 3/32" (2mm) to 1" (25mm) diameter

b. Arch Punches

- Arch / Bell Type construction
- Larger form with a long shaft for convenient holding.
- Designed to cut holes ranging from 3/16" (5mm) to 2.3/4" (70 mm)

Hollow Punches



Arch Punches



ORDERING INFORMATION

CAT NR.	ORD NR.	HOLE DIAMETER	
		(INCH)	(MM)
HOLLOW PUNCHES			
HPL/2	26302	3/32	2
*HPL/3	26303	1/8	3
HPL/4	26304	5/32	4
*HPL/5	26305	3/16	5
HPL/5.5	26371	7/32	5.5
*HPL/6	26306	1/4	6
HPL/7	26307	9/32	7
*HPL/8	26308	5/16	8
HPL/9	26309	23/64	9
*HPL/10	26310	3/8	10
HPL/10.5	26372	13/32	10.5
HPL/11	26311	7/16	11
*HPL/12	26312	1/2	12
HPL/13	26313	17/32	13
HPL/14	26314	9/16	14
HPL/15	26315	19/32	15
*HPL/16	26316	5/8	16
HPL/17	26317	11/16	17
HPL/18	26318	23/32	18
*HPL/19	26319	3/4	19
HPL/20	26320	13/16	20
HPL/21	26321	27/32	21
*HPL/22	26322	7/8	22
HPL/23	26323	29/32	23
HPL/24	26324	15/16	24
*HPL/25	26325	1	25

CAT NR.	ORD NR.	HOLE DIAMETER (D)	
		(INCH)	(MM)
ARCH PUNCHES			
*HPL/5/BEL	26400	3/16	5
*HPL/6/BEL	26401	1/4	6
*HPL/8/BEL	26402	5/16	8
*HPL/10/BEL	26403	3/8	10
HPL/11/BEL	26404	7/16	11
*HPL/12/BEL	26405	1/2	12
HPL/14/BEL	26406	9/16	14
*HPL/16/BEL	26407	5/8	16
HPL/18/BEL	26408	23/32	18
*HPL/19/BEL	26409	3/4	19
HPL/21/BEL	26410	27/32	21
*HPL/22/BEL	26411	7/8	22
HPL/24/BEL	26412	15/16	24
*HPL/25/BEL	26413	1	25
HPL/26	26326	1.1/64	26
HPL/27	26327	1.1/16	27
HPL/28	26328	1.3/32	28
HPL/29	26329	1.1/8	29
*HPL/30	26330	1.3/16	30
HPL/31	26331	1.7/32	31
*HPL/32	26332	1.1/4	32
HPL/33	26333	1.5/16	33
HPL/34	26334	1.11/32	34
HPL/35	26335	1.3/8	35
HPL/36	26336	1.13/32	36
HPL/37	26337	1.15/32	37

* Best Seller

HARDENED



45±5
HRC



HPL/7/BEL/ST



HPL/6/ST



HPL/10/ST



HPL/14/ST

CAT NR.	ORD NR.	HOLE DIAMETER (D)	
		(INCH)	(MM)
ARCH PUNCHES (CONTINUED)			
★HPL/38	26338	1.1/2	38
HPL/39	26339	1.17/32	39
HPL/40	26340	1.9/16	40
HPL/41	26341	1.5/8	41
HPL/42	26342	1.21/32	42
HPL/43	26343	1.11/16	43
HPL/44	26344	1.23/32	44
HPL/45	26345	1.25/32	45
HPL/46	26346	1.13/16	46
HPL/47	26347	1.27/32	47
HPL/48	26348	1.7/8	48
HPL/49	26349	1.15/16	49
★HPL/50	26350	2	50
HPL/52	26352	2.5/64	52
HPL/54	26354	2.5/32	54
HPL/55	26355	2.3/16	55
HPL/57	26357	2.9/32	57
HPL/58	26358	2.19/64	58
HPL/60	26360	2.3/8	60
HPL/62	26362	2.15/32	62
HPL/63	26363	2.1/2	63
HPL/65	26365	2.9/16	65
HPL/67	26367	2.21/32	67
HPL/68	26368	2-11/16	68
HPL/70	26370	2.3/4	70

CAT NR.	ORD NR.	CONSTITUENTS					
SETS							
HPL/5/ST	26390	A set of 5 Hollow punches packed in a vinyl pouch:					
		3/32" (2mm)	5/32" (4mm)	1/4" (6mm)	5/16" (8mm)	3/8" (10mm)	
HPL/5/BEL/ST	26440	A set of 5 Bell type Arch punches packed in a vinyl pouch:					
		1/4" (6mm)	3/8" (10mm)	1/2" (12mm)	5/8" (16mm)	3/4" (19mm)	
★HPL/6/ST	26391	A set of 6 Hollow punches packed in a vinyl pouch:					
		3/16" (5mm)	1/4" (6mm)	5/16" (8mm)	3/8" (10mm)	7/16" (11mm)	1/2" (12mm)
HPL/7/ST	26392	A set of 7 punches packed in a vinyl pouch					
		1/4" (6mm)	5/16" (8mm)	3/8" (10mm)	7/16" (11mm)	7/32" (13mm)	5/8" (16mm) 3/4" (19mm)
★HPL/7/BEL/ST	26441	A set of 7 Bell type Arch punches packed in a vinyl pouch:					
		1/4" (6mm)	3/8" (10mm)	1/2" (12mm)	5/8" (16mm)	3/4" (19mm)	7/8" (22mm) 1" (25mm)
HPL/7A/BEL/ST	26442	A set of 7 Bell type Arch punches packed in a vinyl pouch					
		3/16" (5mm)	5/16" (8mm)	7/16" (11mm)	9/16" (14mm)	23/32" (18mm)	27/32" (21mm) 15/16" (24mm)
★HPL/10/ST	26395	A set of 10 Hollow punches packed in a vinyl pouch:					
		1/4" (6mm)	5/16" (8mm)	3/8" (10mm)	7/16" (11mm)	17/32" (13mm)	9/16" (14mm) 5/8" (16mm)
		3/4" (19mm)	7/8" (22mm)	1" (25mm)			
★HPL/14/ST	26396	A set of 14 punches packed in a wooden box:					
		1/4" (6mm)	5/16" (8mm)	3/8" (10mm)	7/16" (11mm)	17/32" (13mm)	9/16" (14mm) 5/8" (16mm)
		3/4" (19mm)	7/8" (22mm)	1" (25mm)	1.3/16" (30mm)	1.1/4" (32mm)	1.3/8" (35mm) 1.1/2" (38mm)
HPL/16/ST	26397	A set of 16 punches in sizes packed in a wooden box:					
		1/4" (6mm)	5/16" (8mm)	3/8" (10mm)	7/16" (11mm)	17/32" (13mm)	9/16" (14mm) 5/8" (16mm)
		3/4" (19mm)	7/8" (22mm)	1" (25mm)	1.3/16" (30mm)	1.1/4" (32mm)	1.3/8" (35mm) 1.1/2" (38mm)
		1.25/32" (45mm)	2" (50mm)				

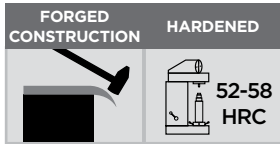
108 Cold Chisels

Individually forged from high quality steel.

Precisely ground cutting edge induction hardened (52-58 HRC) for improved performance & durability

Hardness at the striking end is maintained to under 42 HRC, so that the head will not splinter when subject to hammer blows.

Powder coated shank with accurately ground cutting edge



These are available in the following types:

a. Octagonal Cold Chisels

- Used for general purpose work on cutting and chipping of metals, and shaping, facing and cutting of stonework
- Extra long chisels are useful for all cutting and shaping jobs where extra length is required
- Larger sizes are also available with strong impact proof polypropylene hand guards designed to protect the user's hands from misplaced hammer blows



b. Concrete Point Chisels

- Useful for breaking up concrete floors, sidewalks etc.
- Channels in concrete floors should be marked out with a flat chisel before using the Concrete Point Chisel for stock removal.
- Larger sizes are also available with strong impact proof polypropylene hand guards designed to protect the user's hands from misplaced hammer blows



Octagonal Cold Chisels



ORDERING INFORMATION

CAT NR.	ORD NR.	BLADE WIDTH (W)		OVERALL LENGTH (L)	
		(INCH)	(MM)	(INCH)	(MM)
OCTAGONAL COLD CHISELS					
CHS/4/1-4	32827	1/4	6	4	100
CHS/5/1-4	32800	1/4	6	5	125
CHS/6/1-4	32828	1/4	6	1/4	150
CHS/5/5-16	32801	5/16	8	5	125
CHS/4/3-8	32817	3/8	10	4	100
CHS/5/3-8	32829	3/8	10	5	125
CHS/5.5/3-8	32802	3/8	10	5.1/2	140
*CHS/6/1-2	32803	1/2	13	6	150
CHS/8/1-2	32818	1/2	13	8	200
CHS/10/1-2	32831	1/2	13	10	250
CHS/12/1-2	32810	1/2	13	12	300
CHS/6.5/5-8	32804	5/8	16	6.1/2	163
CHS/7/5-8	32819	5/8	16	7	175
CHS/12/5-8	32811	5/8	16	12	300
CHS/18/5-8	32820	5/8	16	18	450
CHS/7/3-4	32805	3/4	19	7	175
*CHS/8/3-4	32825	3/4	19	8	200
*CHS/10/3-4	32826	3/4	19	10	250
*CHS/12/3-4	32812	3/4	19	12	300
CHS/18/3-4	32815	3/4	19	18	450
CHS/24/3-4	32832	3/4	19	24	600
CHS/7.5/7-8	32806	7/8	22	7.1/2	190
CHS/8/7-8	32821	7/8	22	8	200
CHS/12/7-8	32813	7/8	22	12	300



Octagonal Cold Chisels With Guard



Concrete Point Chisels

CAT NR.	ORD NR.	BLADE WIDTH (W)		OVERALL LENGTH (L)	
		(INCH)	(MM)	(INCH)	(MM)
CHS/8/0-1	32807	1	25	8	200
CHS/9/0-1	32833	1	25	9	225
*CHS/10/0-1	32823	1	25	10	250
*CHS/12/0-1	32814	1	25	12	300
CHS/15/0-1	32824	1	25	15	380
CHS/18/0-1	32816	1	25	18	450
CHS/24/0-1	32834	1	25	24	600

SET - OCTAGONAL COLD CHISEL

CHS/6/ST	32830	A set of 6 Chisels packed in a vinyl pouch:			
		5" x 1/4" (125 x 6mm)			
		5" x 5/16" (125 x 8mm)			
		5.5" x 3/8" (140 x 10mm)			
		6" x 1/2" (150 x 13mm)			
		6.5" x 5/8" (163 x 16mm)			
		7" x 3/4" (175 x 19mm)			

OCTAGONAL COLD CHISELS WITH GRIP GUARD

*CHS/10/3-4/GRP/YE	32841	3/4	19	10	250
*CHS/12/3-4/GRP/YE	32843	3/4	19	12	300
CHS/18/3-4/GRP/YE	32845	3/4	19	18	450
CHS/8/0-1/GRP/YE	32840	1	25	8	200
*CHS/10/0-1/GRP/YE	32842	1	25	10	250
*CHS/12/0-1/GRP/YE	32844	1	25	12	300
CHS/18/0-1/GRP/YE	32846	1	25	18	450

* Best Seller

CAT NR.	ORD NR.	POINT SIZE (P)		OVERALL LENGTH (L)	
		(INCH)	(MM)	(INCH)	(MM)
CONCRETE POINT CHISELS					
CRP/150-13	32650	5/32	4	6	150
CRP/200-13	32651	5/32	4	8	200
CRP/250-16	32652	7/32	5	10	250
*CRP/250-19	32653	1/4	6	10	250
*CRP/300-19	32654	1/4	6	12	300
CONCRETE POINT CHISELS WITH GUARD					
CRP/250-19/GRP	32661	1/4	6	10	250
CRP/300-19/GRP	32662	1/4	6	12	300

* Best Seller

Single piece forging from high quality carbon steel, accurately hardened to BS 3066 specification.

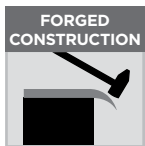
Precisely ground cutting edge induction hardened (52-58 HRC) for improved performance & durability

Hardness at the striking end is maintained to under 42 HRC, so that the head will not splinter when subject to hammer blows

Powder coated bolster with accurately ground cutting edge

Safety warning permanently etched on each bolster

Bolsters are also available with strong impact proof polypropylene hand guards designed to protect the user's hands from misplaced hammer blows



a. Brick Bolsters
Brick Bolsters are used for cutting brick, stone & paving slabs. These should not be used on concrete containing reinforcing bars



b. Electrician's Bolsters
With a much thinner blade construction than a Brick Bolster, Electrician's Floorboard Bolsters are used for cutting tongued joints & lifting floorboards.



ORDERING INFORMATION

CAT NR.	ORD NR.	BLADE WIDTH (W)		STOCK SIZE		OVERALL LENGTH (L)	
		(INCH)	(MM)	(INCH)	(MM)	(INCH)	(MM)
BRICK BOLSTERS							
*BRC/75	32601	3	75	7/8	22	9	230
*BRC/100	32602	4	100	7/8	22	9	230
BRICK BOLSTERS WITH GUARD							
*BRC/75/GRP/YE	32621	3	75	7/8	22	9	230
*BRC/100/GRP/YE	32622	4	100	7/8	22	9	230
ELECTRICIAN'S BOLSTER / FLOOR CHISELS							
*FLR/CHS/9/2-1-2	32642	2.1/2	63	5/8	16	9	230
FLOOR CHISELS / ELECTRICIAN BOLSTERS WITH GUARD							
*FLR/CHS/9/2-1-2/GRP/YE	32643	2.1/2	63	5/8	16	9	230

* Best Seller

110

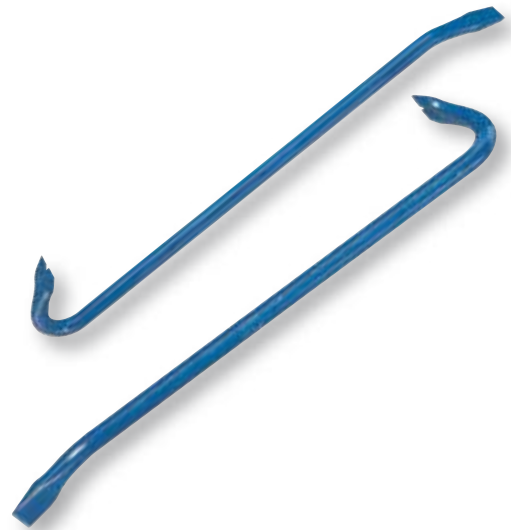
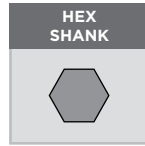
Wrecking Bars

WB

Forged from octagonal section steel

Attractive powder coated finish

Suited for leveraging timber and for pulling out nails from timber, dismantling wooden crates etc.



CAT NR.	ORD NR.	LENGTH		SECTION	
		(INCH)	(MM)	(INCH)	(MM)
WB/000	33100	12	300	5/8	16
WB/00	33101	16	400	5/8	16
*WB/01	33102	18	450	5/8	16
WB/02	33103	20	500	5/8	16
*WB/03	33104	24	600	3/4	19
WB/04	33105	28	700	3/4	19
WB/05	33106	30	750	3/4	19
WB/07	33108	36	900	3/4	19
WB/06	33107	40	1000	3/4	19

* Best Seller

111

Heavy Duty Construction Bars

HDPR

Forged Chrome Steel blade welded to tubular steel bar

Extra-long bar provides higher leverage reducing effort for performing heavier jobs

Heat treated blade hardened 35-45 HRC

Designed for heavy duty prying applications & demolition work. Used to pull, lift, scrape & wedge metal, wood & stone with less effort

Powder coated for increased resistance to corrosion

NEW!



ORDERING INFORMATION

CAT NR.	ORD NR.	LENGTH (L)		BLADE WIDTH		BLADE THICKENSS		HANDLE CROSS SECTION		WEIGHT	
		(INCH)	(MM)	(INCH)	(MM)	(INCH)	(MM)	(INCH)	(MM)	(KGS)	(LBS)
HDPR/46	33140	46	1170	3.35	85	0.27	7	1-1/2 x 1 x 0.078	38 x 25 x 2	3.1	6.85
HDPR/56	33141	56	1425	3	76	1/2	13	2 x 1 x 1/8	51 x 25 x 3	6.2	13.65

A range of kits carefully thought about, keeping in mind the needs of the journeyman... the farmer or rancher.... the mechanicthe carpenter. This is an excellent way to keep your tools organized. These kits are packed in heavy-duty terylene pouches for easy access, organization and storage



KIT/24/ST
24 pc punch & chisel set

ORDERING INFORMATION

CAT NR. KIT/24/ST		ORD NR. 33003					
CONSTITUENTS	BLADE WIDTH		STOCK SIZE		OVERALL LENGTH		
	(INCH)	(MM)	(INCH)	(MM)	(INCH)	(MM)	
OCTAGONAL COLD CHISELS							
CHS/5/1-4	1/4	6	1/4	6	5	125	
CHS/5/5-16	5/16	8	1/4	6	5	125	
CHS/5.5/3-8	3/8	10	5/16	8	5.1/2	140	
CHS/6/1-2	1/2	13	7/16	11	6	150	
CHS/6.5/5-8	5/8	16	1/2	13	6.1/2	163	
CHS/7/3-4	3/4	19	5/8	16	7	175	
CHS/7.5/7-8	7/8	22	3/4	19	7.1/2	190	
CENTRE PUNCHES - HEAVY DUTY							
CP/HD/1-4	1/4	6	1/2	12	6	150	
CP/HD/5-32	5/32	4	3/8	10	5	125	
CP/HD/5-64	5/64	2	1/4	6	3.1/2	90	
PIN PUNCHES - HEAVY DUTY							
PP/HD/1-16	1/16	1.5	1/4	6	4	100	
PP/HD/3-32	3/32	2.5	5/16	8	4.1/2	112	
PP/HD/1-8	1/8	3	5/16	8	4.3/4	119	
PP/HD/5-32	5/32	4	5/16	8	5	125	
PP/HD/3-16	3/16	5	3/8	10	5.1/4	132	
PP/HD/1-4	1/4	6	3/8	10	5.3/4	145	
PP/HD/5-16	5/16	8	7/16	11	6	150	
STARTING PUNCHES - HEAVY DUTY							
SGP/HD/1-16	1/16	1.5	3/8	10	5	125	
SGP/HD/1-8	1/8	3	3/8	10	5	125	
SGP/HD/5-32	5/32	4	3/8	10	5	125	
SGP/HD/3-16	3/16	5	3/8	10	5	125	
SGP/HD/1-4	1/4	6	3/8	10	5	125	
SGP/HD/5-16	5/16	8	1/2	12	6	150	
ACP/1B	Automatic Center Punch, Black Powder Coated - Length 4.3/4" (120 mm), Body Diameter 33/64" (13 mm)						



KIT/26/ST
26 pc punch & chisel set



KIT/14/ST
14 pc punch & chisel set

CAT NR. KIT/26/ST ORD NR. 33004						
CONSTITUENTS	BLADE WIDTH		STOCK SIZE		OVERALL LENGTH	
	(INCH)	(MM)	(INCH)	(MM)	(INCH)	(MM)
OCTAGONAL COLD CHISELS						
CHS/ST/5/1-4	1/4	6	1/4	6	5	125
CHS/5/5-16	5/16	8	1/4	6	5	125
CHS/5.5/3-8	3/8	10	5/16	8	5.1/2	140
CHS/6/1-2	1/2	13	7/16	11	6	150
CHS/6.5/5-8	5/8	16	1/2	13	6.1/2	163
CHS/7/3-4	3/4	19	5/8	16	7	175
CHS/7.5/7-8	7/8	22	3/4	19	7.1/2	190
CHS/8/0-1	1	25	1/2	13	8	200
CHS/12/1-2	1/2	13	7/16	11	12	300
CENTRE PUNCHES - HEAVY DUTY						
CP/HD/1-4	1/4	6	1/2	12	6	150
CP/HD/3-8	3/8	10	5/8	16	6.1/4	160
CP/HD/5-32	5/32	4	3/8	10	5	125
PIN PUNCHES - HEAVY DUTY						
PP/HD/3-32	3/32	2.5	5/16	8	4.1/2	112
PP/HD/1-8	1/8	3	5/16	8	4.3/4	119
PP/HD/5-32	5/32	4	5/16	8	5	125
PP/HD/3-16	3/16	5	3/8	10	5.1/4	132
PP/HD/1-4	1/4	6	3/8	10	5.3/4	145
PP/HD/3-8	3/8	10	1/2	12	6.1/2	163
STARTING PUNCHES - HEAVY DUTY						
SGP/HD/1-16	1/16	1.5	3/8	10	5	125
SGP/HD/1-8	1/8	3	3/8	10	5	125
SGP/HD/3-16	3/16	5	3/8	10	5	125
SGP/HD/1-4	1/4	6	3/8	10	5	125
DRIFT PUNCHES - HEAVY DUTY						
DFP/HD/1-8	1/8	3	5/16	8	8	200
DFP/HD/3-16	3/16	5	1/2	12	10	250
DFP/HD/1-4	1/4	6	5/8	16	12	300
DRIFT PUNCHES - HEAVY DUTY						
PKP/HD/3-8	5/32	4	3/8	10	5	125

CAT NR. KIT/14/ST ORD NR. 33001						
CONSTITUENTS	BLADE WIDTH		STOCK SIZE		OVERALL LENGTH	
	(INCH)	(MM)	(INCH)	(MM)	(INCH)	(MM)
OCTAGONAL COLD CHISELS						
CHS/5.5/3-8	3/8	10	5/16	8	5.1/2	140
CHS/6/1-2	1/2	13	7/16	11	6	150
CHS/6.5/5-8	5/8	16	1/2	13	6.1/2	163
CHS/7/3-4	3/4	19	5/8	16	7	175
CHS/7.5/7-8	7/8	22	3/4	19	7.1/2	190
CENTRE PUNCHES - HEAVY DUTY						
CP/HD/5-32	5/32	4	3/8	10	5	125
CP/HD/1-4	1/4	6	1/2	12	6	150
PIN PUNCHES - HEAVY DUTY						
PP/HD/1-16	1/16	1.5	1/4	6	4	100
PP/HD/1-8	1/8	3	5/16	8	4.3/4	119
PP/HD/3-16	3/16	5	3/8	10	5.1/4	132
DRIFT PUNCHES - HEAVY DUTY						
DFP/HD/1-8	1/8	3	5/16	8	8	200
DFP/HD/5-32	5/32	4	3/8	10	9	225
STARTING PUNCHES - HEAVY DUTY						
SGP/HD/5-16	5/16	8	1/2	12	6	150
SGP/HD/1-8	1/8	3	3/8	10	5	125

Punch & Chisel Sets (continued)



KIT/8/ST
24 pc punch & chisel set

CAT NR. KIT/8/ST		ORD NR. 33000					
CONSTITUENTS	BLADE WIDTH		STOCK SIZE		OVERALL LENGTH		
	(INCH)	(MM)	(INCH)	(MM)	(INCH)	(MM)	
OCTAGONAL COLD CHISELS							
CHS/6/1-2	1/2	13	7/16	11	6	150	
CHS/6.5/5-8	5/8	16	1/2	13	6.1/2	163	
CHS/7/3-4	3/4	19	5/8	16	7	175	
CENTRE PUNCHES - HEAVY DUTY							
CP/HD/5-32/SPL	5/32	4	5/16	10	5.1/2	125	
PIN PUNCHES - HEAVY DUTY							
PP/HD/1-8	1/8	3	5/16	8	4.3/4	119	
PP/HD/3-16/SPL	3/16	5	5/16	8	5.1/4	132	
PP/HD/1-4	1/4	6	3/8	10	5.3/4	145	
STARTING PUNCHES - HEAVY DUTY							
SGP/HD/3-16	3/16	5	3/8	10	5	125	



KIT/16/ST
16 pc punch & chisel set

CAT NR. KIT/16/ST		ORD NR. 33002					
CONSTITUENTS	BLADE WIDTH		STOCK SIZE		OVERALL LENGTH		
	(INCH)	(MM)	(INCH)	(MM)	(INCH)	(MM)	
OCTAGONAL COLD CHISELS							
CHS/5/5-16	5/16	8	1/4	6	5	125	
CHS/6/1-2	1/2	13	7/16	11	6	150	
CHS/6.5/5-8	5/8	16	1/2	13	6.1/2	163	
CHS/7/3-4	3/4	19	5/8	16	7	175	
CHS/8/7-8/SPL	7/8	22	5/8	16	8	200	
CENTRE PUNCHES - HEAVY DUTY							
CP/HD/1-8	1/8	3	5/16	8	4.1/4	108	
CP/HD/5-32/SPL	5/32	4	5/16	8	5.1/2	138	
CP/HD/1-4/SPL	1/4	6	3/8	10	6	150	
PIN PUNCHES - HEAVY DUTY							
PP/HD/1-8	1/8	3	5/16	8	4.3/4	119	
PP/HD/3-16/SPL	3/16	5	5/16	8	5.1/4	132	
PP/HD/1-4	1/4	6	3/8	10	5.3/4	145	
DRIFT PUNCHES - HEAVY DUTY							
DFP/HD/3-16/SPL	3/16	5	5/16	8	10	250	
DFP/HD/1-4/SPL	1/4	6	3/8	9.5	10	250	
STARTING PUNCHES - HEAVY DUTY							
SGP/HD/1-8/SPL	1/8	3	5/16	8	5	125	
SGP/HD/3-16	3/16	5	3/8	10	5	125	
SGP/HD/1-4	1/4	6	3/8	10	5	125	



KIT/7/ST
7 pc punch & chisel set

CAT NR. KIT/7/ST		ORD NR.33005					
CONSTITUENTS	BLADE WIDTH		STOCK SIZE		OVERALL LENGTH		
	(INCH)	(MM)	(INCH)	(MM)	(INCH)	(MM)	
OCTAGONAL COLD CHISELS							
CHS/6/1-2	1/2	13	7/16	11	6	150	
CHS/6.5/5-8	5/8	16	1/2	13	6.1/2	163	
CHS/7/3-4	3/4	19	5/8	16	7	175	
CENTRE PUNCHES - HEAVY DUTY							
CP/HD/5-32	5/32	4	5/16	8	5.1/2	138	
PIN PUNCHES - HEAVY DUTY							
PP/HD/1-8	1/8	3	5/16	8	4.3/4	119	
PP/HD/3-16/SPL	3/16	5	5/16	8	5.1/4	132	
DRIFT PUNCHES - HEAVY DUTY							
DFP/HD/5-32	5/32	4	3/8	10	9	230	



KIT/13/ST
13 pc punch & chisel set

CAT NR. KIT/13/ST		ORDNR. 33006					
CONSTITUENTS	BLADE WIDTH		STOCK SIZE		OVERALL LENGTH		
	(INCH)	(MM)	(INCH)	(MM)	(INCH)	(MM)	
OCTAGONAL COLD CHISELS							
CHS/6/1-2	1/2	13	7/16	11	6	150	
CHS/6.5/5-8	5/8	16	1/2	13	6.1/2	163	
CHS/7/3-4	3/4	19	5/8	16	7	175	
CENTRE PUNCHES - HEAVY DUTY							
CP/HD/1-4	1/4	6	1/2	13	6	150	
PIN PUNCHES - HEAVY DUTY							
PP/HD/1-8	1/8	3	5/16	8	4.3/4	119	
PP/HD/3-16/SPL	3/16	5	5/16	8	5.1/4	132	
PP/HD/1-4	1/4	6	3/8	10	5.3/4	145	
PP/HD/5-16	5/16	8	7/16	11	6	150	
PP/HD/3-32/SPL	3/32	2.5	1/4	6	4.1/4	108	
DRIFT PUNCHES - HEAVY DUTY							
DFP/HD/3-16	3/16	5	1/2	13	10	250	
DFP/HD/5-32/SPL	5/32	4	1/2	13	10	250	
DFP/HD/3-8/SPL	3/8	10	5/8	16	10	250	
PRICK PUNCHES - HEAVY DUTY							
PKP/HD/3-8	3/8	10	3/8	10	5	125	

G-BAR® HEAVY DUTY WRECKING BAR

Product Brief

Heavy Duty Wrecking Bar for the professional user

Manufactured from high quality forged alloy steel

I Section steel bar, fully hardened & tempered for added strength and durability. Will withstand heavy loads without deformation

Low profile claw fits securely under the work-piece giving larger prying power

Wide & thin profile of claw permits easy insertion under the surface

Large bar to claw angle for 2X leverage and convenient use near work surface



CAT NR.	ORD NR.	OVERALL LENGTH		SECTION	
		(INCH)	(MM)	(INCH)	(MM)
GBR/14	33185	14	356	1/2 x 19/32	12 x 15
GBR/24	33186	24	610	5/8 x 1-3/16	16 x 30
GBR/36	33187	36	914	5/8 x 1-3/16	16 x 30
GBR/48	33188	48	1220	5/8 x 1-3/16	16 x 30

Product Brief

Strong & robust construction

Hammers heads are individually forged from special steel and induction hardened 50-58 HRC

Fibreglass handle

Lightweight yet durable dual injection fibreglass handle for controlled and balanced swing

Overstrike protection

Handles designed with 25% wider neck & polypropylene cover to prevent damage due to overstrikes

Fatigue free use

TPR grip on the handle absorbs shock and vibration during operation.

Safe & secure

Heads are securely held in place and fitted with the handle using tough epoxy adhesive ensuring that the handle does not fly off even with rough use

UTILITY

Bending & shaping metal, Driving punches & chisels, Concrete & stone work, Hand forging, Setting rivets, Peen riveted & welded material & Texturing face of metal



CAT NR.	ORD NR.	HEAD WEIGHT		OVERALL LENGTH	
		(GMS)	(OZ)	(INCH)	(MM)
BPFG/8/12	36490	226	8	12	300
BPFG/12/13	36491	340	12	13	330
BPFG/16/13	36492	450	16	13	330
BPFG/24/14	36493	680	24	14	350
BPFG/32/14	36494	900	32	14	350
BPFG/48/16	36495	1360	48	16	400

По вопросам продаж и поддержки обращайтесь:

Алматы (7273)495-231	Казань (843)206-01-48	Новокузнецк (3843)20-46-81	Смоленск (4812)29-41-54
Архангельск (8182)63-90-72	Калининград (4012)72-03-81	Новосибирск (383)227-86-73	Сочи (862)225-72-31
Астрахань (8512)99-46-04	Калуга (4842)92-23-67	Омск (3812)21-46-40	Ставрополь (8652)20-65-13
Барнаул (3852)73-04-60	Кемерово (3842)65-04-62	Орел (4862)44-53-42	Сургут (3462)77-98-35
Белгород (4722)40-23-64	Киров (8332)68-02-04	Оренбург (3532)37-68-04	Тверь (4822)63-31-35
Брянск (4832)59-03-52	Краснодар (861)203-40-90	Пенза (8412)22-31-16	Томск (3822)98-41-53
Владивосток (423)249-28-31	Красноярск (391)204-63-61	Пермь (342)205-81-47	Тула (4872)74-02-29
Волгоград (844)278-03-48	Курск (4712)77-13-04	Ростов-на-Дону (863)308-18-15	Тюмень (3452)66-21-18
Вологда (8172)26-41-59	Липецк (4742)52-20-81	Рязань (4912)46-61-64	Ульяновск (8422)24-23-59
Воронеж (473)204-51-73	Магнитогорск (3519)55-03-13	Самара (846)206-03-16	Уфа (347)229-48-12
Екатеринбург (343)384-55-89	Москва (495)268-04-70	Санкт-Петербург (812)309-46-40	Хабаровск (4212)92-98-04
Иваново (4932)77-34-06	Мурманск (8152)59-64-93	Саратов (845)249-38-78	Челябинск (351)202-03-61
Ижевск (3412)26-03-58	Набережные Челны (8552)20-53-41	Севастополь (8692)22-31-93	Череповец (8202)49-02-64
Иркутск (395)279-98-46	Нижний Новгород (831)429-08-12	Симферополь (3652)67-13-56	Ярославль (4852)69-52-93
Россия (495)268-04-70	Киргизия (996)312-96-26-47	Казахстан (7172)727-132	