

# Технические характеристики

## По вопросам продаж и поддержки обращайтесь:

Алматы (7273)495-231	Казань (843)206-01-48	Новокузнецк (3843)20-46-81	Смоленск (4812)29-41-54
Архангельск (8182)63-90-72	Калининград (4012)72-03-81	Новосибирск (383)227-86-73	Сочи (862)225-72-31
Астрахань (8512)99-46-04	Калуга (4842)92-23-67	Омск (3812)21-46-40	Ставрополь (8652)20-65-13
Барнаул (3852)73-04-60	Кемерово (3842)65-04-62	Орел (4862)44-53-42	Сургут (3462)77-98-35
Белгород (4722)40-23-64	Киров (8332)68-02-04	Оренбург (3532)37-68-04	Тверь (4822)63-31-35
Брянск (4832)59-03-52	Краснодар (861)203-40-90	Пенза (8412)22-31-16	Томск (3822)98-41-53
Владивосток (423)249-28-31	Красноярск (391)204-63-61	Пермь (342)205-81-47	Тула (4872)74-02-29
Волгоград (844)278-03-48	Курск (4712)77-13-04	Ростов-на-Дону (863)308-18-15	Тюмень (3452)66-21-18
Вологда (8172)26-41-59	Липецк (4742)52-20-81	Рязань (4912)46-61-64	Ульяновск (8422)24-23-59
Воронеж (473)204-51-73	Магнитогорск (3519)55-03-13	Самара (846)206-03-16	Уфа (347)229-48-12
Екатеринбург (343)384-55-89	Москва (495)268-04-70	Санкт-Петербург (812)309-46-40	Хабаровск (4212)92-98-04
Иваново (4932)77-34-06	Мурманск (8152)59-64-93	Саратов (845)249-38-78	Челябинск (351)202-03-61
Ижевск (3412)26-03-58	Набережные Челны (8552)20-53-41	Севастополь (8692)22-31-93	Череповец (8202)49-02-64
Иркутск (395)279-98-46	Нижний Новгород (831)429-08-12	Симферополь (3652)67-13-56	Ярославль (4852)69-52-93
Россия (495)268-04-70	Киргизия (996)312-96-26-47	Казахстан (7172)727-132	

# 170 2 Jaw Hand Riveter

FH-10

**NEW!**

**50% Stronger & More Durable than most other riveters in the market**

Manufactured from high strength structural steel

All parts that come in contact with the rivet are heat treated for increased wear resistance

**Easy Maintenance**

Jaws can be cleaned without tool disassembly

Ergonomically designed longer handle to suit all hand sizes. Complete with PVC dip coated non-slip grip

Attractive and safe lead free powder coated finish

Includes 4 nose pieces & a nose piece wrench

**For Riveting**

a. Aluminum Pop / Blind Rivets:

- 3/32" (2.4 mm)
- 1/8" (3.2 mm)
- 5/32" (4.0 mm)
- 3/16" (4.8 mm)

b. Stainless Steel Rivets:

- 1/8" (3.2 mm)
- 5/32" (4.0 mm)

Suitable for industrial, engineering & maintenance jobs



Nose body designed to fit into smaller applications



Longer handle with ergonomic PVC dip coated sleeve



4 nose pieces for a range of rivets sizes:  
 3/32" (2.4 mm)  
 1/8" (3.2 mm)  
 5/32" (4.0 mm)  
 3/16" (4.8 mm)



Convenient change of nose pieces with wrench

**ORDERING INFORMATION**

CAT NR.	ORD NR.
RT/FH-10	31653

**NEW!**

**50% Stronger & More Durable than most other riveters in the market**

Designed for riveting threaded inserts for use as nuts

Manufactured from high strength structural steel

All parts that come in contact with the rivet are heat treated for increased wear resistance

Ergonomically designed handle to suit all hand sizes. Complete with PVC dip coated non-slip grip

Attractive and safe lead free powder coated finish

**Includes**

- 3 threaded Mandrels
- 3 Nose pieces for riveting M4, M5 & M6 threaded rivets
- Spare M4 Rivets: 15
- Spare M5 Rivets: 15
- Spare M6 Rivets: 10



M4 Rivets: 15



M5 Rivets: 15



M6 Rivets: 10



Threaded Mandrels & Nose pieces



Convenient change of nose pieces with wrench

**ORDERING INFORMATION**

CAT NR.	ORD NR.
RT/FH-20	31654



**NEW!**

Heavy duty industrial hand riveter best suited for continuous & repetitive usage especially in automotive, construction & agricultural application

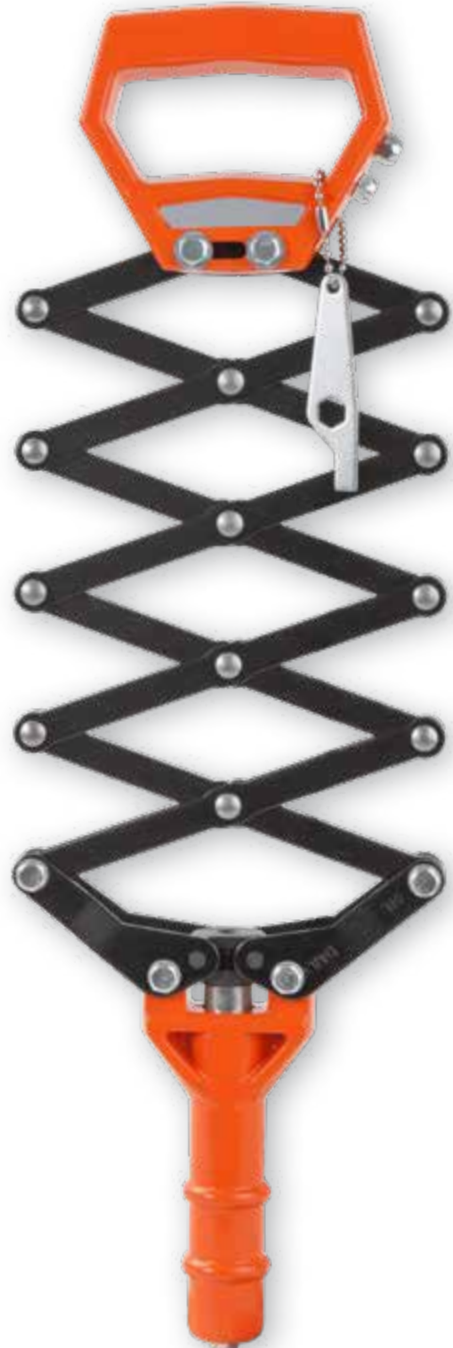
Strong & sturdy yet lightweight aluminum die cast body & handle with heavy gauge steel springs

All parts that come in contact with the rivet are heat treated for increased wear resistance

Attractive and safe lead free powder coated finish

Includes 3 nose pieces & a spanner

Suitable for riveting aluminum, steel & stainless steel pop / blind rivets 1/8" (3.2 mm), 5/32" (4.0 mm) & 3/16" (4.8 mm)

**ORDERING INFORMATION**

CAT NR.	ORD NR.
LT/FH-44	31655

An ideal combination of Brass & Aluminum makes these hammers very safe for use even in explosive environments

The Brass Head does not spark and protects metal surfaces from any damage such as denting or marking during use

The Non slip aluminium handle is knurled for comfortable non-slip grip


**ORDERING INFORMATION**

CAT NR.	ORD NR.	HEAD WT.	
*BRH/6oz	32490	6oz	0.170 kg
*BRH/1	32491	1 lb	0.450 kg
BRH/2-1-2	32492	2.1/2 lbs	1.140 kg
BRH/3	32493	3 lbs	1.360 kg
BRH/4	32494	4 lbs	1.820 kg

\* Best Seller

Grommets or eyelets as they are commonly called are used to repair canvas, tarpaulins, tents, awnings, sailcloth, lawn furniture, pool covers etc.

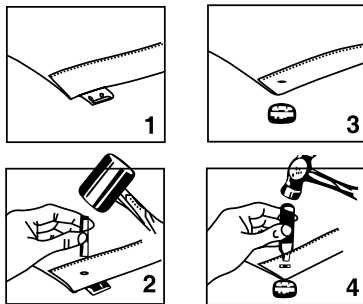
These are offered as a kit containing:

- a. Solid Brass Grommets
- b. Hole Punch
- c. Backer Block
- d. Setting Tool
- e. Anvil

Grommets are made from solid brass making them rust resistant.

Hole Punch and Setting Tool are precision machined from single bar of solid steel for additional durability

Replacement Grommets also available



Hole Punch

Setting Tool

### ORDERING INFORMATION

CAT NR.	ORD NR.	SIZE	KIT CONSTITUENTS
<b>GROMMET KITS</b>			
GRMT/1-4/ST24	26600	1/4" (6mm)	Includes 24 brass grommets (eyelets), hole punch, backer block, setting tool and anvil
GRMT/3-8/ST12	26601	3/8" (10mm)	Includes 12 brass grommets (eyelets), hole punch, backer block, setting tool and anvil
GRMT/1-2/ST12	26602	1/2" (12mm)	Includes 12 brass grommets (eyelets), hole punch, backer block, setting tool and anvil
<b>REPLACEMENT GROMMETS</b>			
GRM/B/1-4/ST24	26650	1/4" (6mm)	24 Replacement Grommets
GRM/B/3-8/ST12	26651	3/8" (10mm)	12 Replacement Grommets
GRM/B/1-2/ST12	26652	1/2" (12mm)	12 Replacement Grommets

### Grommet Kit



Washer

Grommet

Anvil

Backer Block

Paint mixers are ideal for mixing paint and a multitude of other low density materials

Manufactured from a 5/16"(8mm) hexagonal shaft with fluted construction, these have an attractive red powder coated finish for increased protection against rust

**Using Paint Mixers**

Place Paint Mixer in the container of material and gently work around the container edges till the material starts flowing towards the center of the blades

- Continue to gently work on the material till it is of desired consistency
- For coarse or stiff materials, reverse the direction of the drill and follow above steps. The mixer works best with a variable speed reversible drill machine with 400 - 600 watts minimum power. Recommended speed between 200-700 RPM depending upon the material being mixed

**Important**

- Do not use Paint Mixer with lacquer or other such inflammable liquids [with flashpoint under 32°C (70°F)]
- Insert mixer well into the material before turning on the drill.
- When mixing is complete, wait for the mixer to come to a halt before removing it from the container.



**ORDERING INFORMATION**

CAT. NR.	ORD NR.	DIA. OF MIXING WHEEL		LENGTH		FITS DRILL SIZE	
		(INCH)	(MM)	(INCH)	(MM)	(INCH)	(MM)
*PMX/60	14620	2.3/8	60	16	400	3/8	9.5
PMX/80	14621	3.3/16	80	16	400	3/8	9.5

\* Best Seller

176

## Scratch Awl

Awls are used for making small holes in narrow timber.

The alloy steel blade runs through the handle and is securely fastened to the plated steel ferrule and the cap. Hardwood handle is contoured for a comfortable grip



CAT NR.	ORD NR.	OVERALL LENGTH	
		(INCH)	(MM)
SA/818	03230	6-15/32	165

## Double Face Mallet Kit

Multi-purpose striking tool useful for a variety of applications in industrial, automotive, light engineering & metalworking; for striking surfaces that could get damaged by steel hammers

Chrome plated screw head with 2 screw-in replaceable heads. Tubular steel handle shifts the weight balance towards the head for extra power in each blow

### Available with a choice of heads:

#### a. Plastic Head

To lightly strike material without damaging or marring the surface. Used for piston cylinder assembly in engines, jewellery making etc.

#### b. Rubber Head

To deliver cushioned strike. Used in sheet metal & aluminium fabrication jobs, installation of wheel hub caps in automotive assembly & maintenance

#### c. Brass Head

Used in denting & painting shops, fitting jobs without causing any damage to the work surface

#### d. Copper Head

Provides a firm positive blow without any risk of marring the surface of highly finished expensive components



a. Plastic Head



b. Rubber Head



c. Brass Head



d. Copper Head

### ORDERING INFORMATION

CAT NR.	ORD NR.	DESCRIPTION
<b>KIT</b>		
KIT/HMR/SF/4ST	34575	Mallet with Plastic & Rubber Head Fitted, Copper & Brass as Spares
<b>SPARE HEADS</b>		
HD/PR/HMR/25	32535	Red Plastic Head
HD/PB/HMR/25	32536	Black Rubber Head
HD/BR/HMR/25	32537	Brass Head
HD/CU/HMR/25	32538	Copper Head

### APPLICATION

- Light Engineering Jobs
- Injection Moulding
- Light Metal Working
- Denting & Painting
- Assembly & Fitting in automotive workshops
- Assembly work when need to avoid damage to the surface of component & parts
- Jewellery Making



---

## HEAVY DUTY LONG ARM HAND RIVETER

### Product Brief

High performance 2 jaw riveter with built in mandrel collector

5 interchangeable nose pieces threaded onto the handle for convenient storage when not in use

Well balanced long arms for greater leverage

Anti-skid and soft handle grip for user comfort

Fewer moving parts ensure less wear & tear

### For Riveting

#### a. Aluminum and steel POP/ Blind Rivets

1/8" (3.2 mm)

5/32" (4.0 mm)

3/16" (4.8 mm)

15/64" (6.0 mm)

1/4" (6.4 mm)

#### b. Stainless Steel Rivets

1/8" (3.2 mm)

5/32" (4.0 mm)

3/16" (4.8 mm)

15/64" (6.0 mm)

Ideal for use in ship building, machine manufacturing, on-shore & off-shore fabrication jobs, infrastructure projects, agriculture equipment manufacturing etc.



CAT NR.

ORD NR.

RT/HD/17

31658

---

## 360° SWIVEL HEAD RIVETER

---

### Product Brief

Innovative 360° swivel head riveter that can be used at any angle

Swivel head allows the user to set rivets at right angle or straight-on with a simple twist of riveter head

Manufactured from high strength structural steel and light weight aluminum alloy

All parts that come in contact with rivet are heat treated for increased wear resistance

Spring loaded riveter handle for easy rivet loading

Anti slip TPR grip for user comfort for riveting

Premium powder coated finish for corrosion resistance

Includes 4 nose pieces & a nose piece wrench

### For Riveting

#### a. Aluminum and Steel POP/Blind Rivets

3/32" (2.4 mm)

1/8" (3.2 mm)

5/32" (4.0 mm)

3/16" (4.8 mm)

#### b. Stainless Steel Rivets

1/8" (3.2 mm) 5/32" (4.0 mm)

Suitable for industrial, automotive, engineering & maintenance jobs



CAT NR.

ORD NR.

---

RT/SW/360	31659
-----------	-------

**По вопросам продаж и поддержки обращайтесь:**

Алматы (7273)495-231	Казань (843)206-01-48	Новокузнецк (3843)20-46-81	Смоленск (4812)29-41-54
Архангельск (8182)63-90-72	Калининград (4012)72-03-81	Новосибирск (383)227-86-73	Сочи (862)225-72-31
Астрахань (8512)99-46-04	Калуга (4842)92-23-67	Омск (3812)21-46-40	Ставрополь (8652)20-65-13
Барнаул (3852)73-04-60	Кемерово (3842)65-04-62	Орел (4862)44-53-42	Сургут (3462)77-98-35
Белгород (4722)40-23-64	Киров (8332)68-02-04	Оренбург (3532)37-68-04	Тверь (4822)63-31-35
Брянск (4832)59-03-52	Краснодар (861)203-40-90	Пенза (8412)22-31-16	Томск (3822)98-41-53
Владивосток (423)249-28-31	Красноярск (391)204-63-61	Пермь (342)205-81-47	Тула (4872)74-02-29
Волгоград (844)278-03-48	Курск (4712)77-13-04	Ростов-на-Дону (863)308-18-15	Тюмень (3452)66-21-18
Вологда (8172)26-41-59	Липецк (4742)52-20-81	Рязань (4912)46-61-64	Ульяновск (8422)24-23-59
Воронеж (473)204-51-73	Магнитогорск (3519)55-03-13	Самара (846)206-03-16	Уфа (347)229-48-12
Екатеринбург (343)384-55-89	Москва (495)268-04-70	Санкт-Петербург (812)309-46-40	Хабаровск (4212)92-98-04
Иваново (4932)77-34-06	Мурманск (8152)59-64-93	Саратов (845)249-38-78	Челябинск (351)202-03-61
Ижевск (3412)26-03-58	Набережные Челны (8552)20-53-41	Севастополь (8692)22-31-93	Череповец (8202)49-02-64
Иркутск (395)279-98-46	Нижний Новгород (831)429-08-12	Симферополь (3652)67-13-56	Ярославль (4852)69-52-93
Россия (495)268-04-70	Киргизия (996)312-96-26-47	Казахстан (7172)727-132	